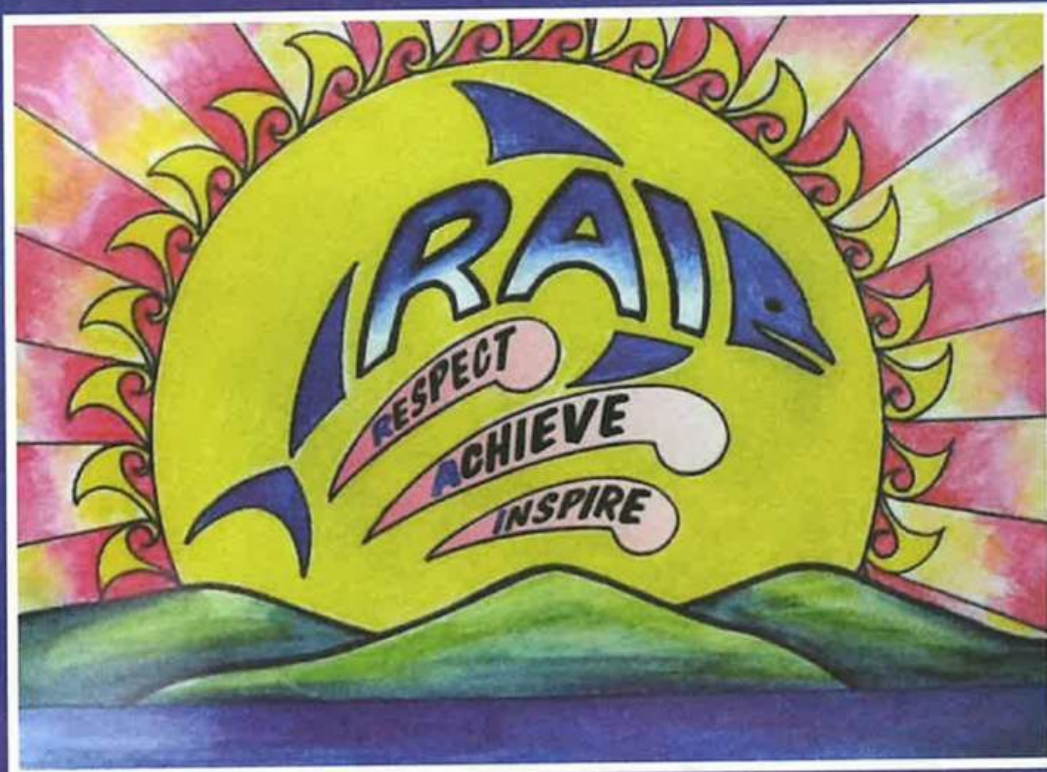




Rai Valley Area School

Newsletter



Rai Valley Area School
**Growing and Learning
Towards a Great Future**

Phone: 03 571 6016
Email: office@rai.school.nz
www.rai.school.nz

Rai Valley Area School

Newsletter

	Issue No.11 6th September 2024	
--	----------------------------------	--

Tumuaki's Report



Kia ora koutou

This term is absolutely flying. It is great to see the wide range of opportunities our students have had over the recent weeks.

The EPro8 competitions students from Years 5-8 were held in Nelson. While our teams were unplaced the experience of competing with city schools is valuable and allows our students to push their boundaries.

Last Friday our student council organised a bake sale for Daffodil Day. Our students raised \$455.80. This is a great effort, and I would like to acknowledge the extra work of Elina, Kirillee, and Mrs. Wiesner.

Congratulations to both our Saturday netball teams. The Ferns won their final against Nelson Girls. They have practiced hard and improved throughout the season. It is a real credit to the team who also have some Year 7 students in the team. The Senior Girls played well but lost to come second in their grade. They also have done well, after winning the first round and being promoted to collegiate 8.

Playball has been the sport for the latest house competition. It is terrific to see the healthy rivalry that is occurring.

Our Details:

Rai Valley Area School

6700 SH6, RD 2 Rai Valley

Marlborough 7192

Telephone: (03) 571 6016

Email office: office@rai.school.nz

Web address: www.rai.school.nz

Our People:

Principal: Maree Furness

Primary Leader: Karen Davies

Secondary Leader: Dan Waldie

Primary Senco: Jennie Brook-Watt

Secondary Senco: Eli Briasco

Learning Support Coordinator: Theresa Neal

Executive Officer: April Morris

Receptionist: Pauline Agnew

Caretaker: Shane Dearman

Tumuaki's Report con't



As a school, we are focused on growing the inter-house competitions. Thank you to Mr Briasco and Miss Haymen for making this happen.

Next week the annual Maud Island Trip is happening. For our junior school, this is a real highlight. We are privileged to have access to a sanctuary Island with the support of the Department of Conservation.

Also next week we are holding the annual Student Trustee Elections. The role of the Student Trustee is really important. It is a voice for students at the governance level, which is valued by the Board. This year we have 5 nominations, there will be presentations from these students on Tuesday with elections on Wednesday 11th September.

Preparations are underway for the Year 9 and 10 Camp at Lake Rotoiti Outdoor Education Centre. This is a full week camp in the last week of school. We are joining Tapawera Area School so our stardust will have the opportunity to meet new people and form friendships.

Last week our school supported the opening of the Village Green. I would like to congratulate our students on their behaviour. For a number of our students, this was outside their comfort zone but they stepped up and represented our school with pride.

Attendance continues to be a major focus. Our attendance for the last week is 91%. This is heading in the right direction. Congratulations to Year 2 who had 92.9% attendance followed closely by Year 6 with 92.6 %. Please remember to email or ring Pauline if your child is going to be away.

Kia ora koutou
Maree



Curious Cove Holiday Camps

Senior Camp (11 – 14 yrs) Mon 30th Sept – Fri 4th Oct

Junior Camp (8 – 10 yrs) Mon 7th – Fri 11th Oct

Camp Costs are \$225 and online enrolments can be made from our website (www.curiouscove.org)

We also have dates available next year if you are looking for a school camp venue.

Regards, Jane Ross
Camp Manager
Curious Cove (TVCC Trust)





I feel that this term has gone by so quickly and spring is almost here. Pet Day planning is well underway.

Children have received their pet diaries and teachers have made a selection of 'in-class' activities.

The rest is up to the children to construct and enter whatever they want. School holidays soon will be a great time for these activities and for 'pet-care' to the animals they are bringing in the first week back.

On Tuesday and Wednesday this week 2 teams of students went to Nelson to compete in the EPro8 Construction challenge. It was a great experience and they really challenged themselves. See further in the newsletter for some photos.

School photos were taken last Thursday and we have received back the proofs. Orders went home on Wednesday for your perusal and ordering. Please see Pauline or Renee if you have any queries. I believe these are due back 16th September, to the office.

At the end of this term, Mrs Ballantyne will be going on maternity leave. Mrs Kiddey will teach room 13's class for all of Term 4. We are grateful to have her help. Mrs Moore will continue to support Rm 13 and Mrs Kiddey on Wednesdays. We wish Mrs Ballantyne all the very best for the arrival of her new baby. I'm sure we will see some photos soon after this happy event.



Next Thursday 12th September we are lucky enough to have the 'Bricks in Schools' programme come and work with us for the day. All primary students and up to Year 8s will be working in the hall for the day. On this day the year 7-8s will be allowed to be in mufti clothes for the day. Clothes that are practical to allow movement for being on the floor or at desks. Warm in the morning in the hall, but also not too hot for the afternoon activities. This does NOT include Oodies, please.

Spring is upon us, crazy weather some days, beautiful the next.
Just 3 more weeks to the end of the term.

Regards,
Karen Davies
Head of Primary Syndicate/ AP





Such a joy to watch as they played so well together. Not one niggle or argument. I was so impressed and proud of them.

Mrs Paula Moore

Wanted!! any spare fence standards

We are after some standards to keep at school for our pet day. We are hoping some kind farmers may donate a couple each to us. Please drop to school office if you would prefer us to pick up please contact either Karen Davies

karen.davies@rai.school.nz 03 5716016 or
Renee Joep on renee@rai.school.nz
0277750083.

We are greatly appreciative of all donations.



Do you have an RVAS Razorback T-shirt at home? We are currently missing seven t-shirts and are desperately seeking them back for the start of our summer sports season.

Please return to Mr Briasco or Mrs Massey as soon as possible.





EPRO8

This week several of our year 5-8 students have been competing in the Nelson Inter-School EPro8 Competition. Our students demonstrated fantastic resilience, teamwork and reading comprehension skills as they tackled challenges designed to promote science, engineering and problem solving.





CELEBRATING STUDENT SUCCESS

NETBALL 2024



The Rai Valley netball teams had a fantastic season this year. Both teams made it to the finals of their grades with the Rai Valley Ferns taking out the trophy for Collegiate 10b. The girls are making impressive improvements, putting in effort and training every week. We are excited to see our teams continue to show everyone what our small school can do next year!

Big thank you to all of the whānau behind the girls, travelling to games each week and coming to cheer them on!

Seth Staples is our Runner Up for the Youth Category, congrats Seth!!
Winning an exclusive ride down the runway in the Airport Firetruck with this perfectly timed image.

#planespotting #nzplanespotting #nelsonairport
#nelsonairportnz #airnewzealand



Seth's photo he won 2nd place for at Nelson Airport Plane spotting competition





Kia ora tatou

The final few weeks of term are gearing up to be incredible on a number of levels. Next week we have a group of Year 6s and 7s going off to Maud Island and witnessing the results of years of conservation efforts first hand.

We also have "bricks in schools" coming where our Primary students and years 7 and 8s will be busy working with over 120,000 lego bricks on a range of activities through the day "with a special focus on critical thinking, creativity, communication, and collaboration) and character qualities (with an emphasis on curiosity, persistence, and adaptability)."

The following week (16th to 20th) is one of our External Assessment weeks.

This is when the majority of our Year 10 students will be attempting the second round of the Reading, Writing and Numeracy assessments all of which contribute towards the level 1 Literacy and Numeracy co-requisites.

Students in years 11-13 will also be working on Derived Grade Assessments. These assessments are vitally important not only because they provide an insight into potential achievement in the end of year externals, but also because they are able to be used in the event that students are not able to attend the formal exams at the end of the year. Derived Grade Information. can be found on the NZQA website.

We cannot emphasize how important these moments are, and the expectation is that all students (barring significant events or with a medical "certificate") attend the exam sessions that they are expected to be in.

With three weeks left of this term and four weeks in term 4 before the start of the formal exam period, now is the time when the pressure is on our NCEA students to focus on ensuring the work they submit for internal assessments is the very best it can be. Finally Week 10 of this term (the final week!) will see our Year 9 and 10 students going off to our annual camp (alongside Tapawera School) to Lake Rotoiti. Both year groups will be embarking on a range of activities including an overnight camp in the wilderness, with the Year 10 cohort venturing further into the backcountry to spend the night "under the stars" (or tarpaulins). Hopefully the weather holds out for us, either way it is going to be a great adventure for everyone!

As always, many thanks for your support.

nga mihi nui

Dan Waldie
Deputy Principal - Secondary

**"EVERY DAY IN
EVERY WAY I GET
BETTER AT TAKING
EXAMS"**



Whole School News



HELLO, my name is Olivia and I do a grappling combat sport called Brazilian Jiu-Jitsu. I first started Brazilian Jiu-Jitsu when I was just 6 years old. I go three days a week to Nelson to practice it.

I currently have 16 medals: **2 BRONZE**, **3 SILVER** and **11 GOLD**.

I have competed in competitions in Blenheim 3 times. I got my first medal that was **GOLD**, in Blenheim and my second **GOLD** was from our Nelson club. I've been to 3 competitions in Christchurch and 1 in Auckland which I just went to in August.

Brazilian jiu-jitsu was first developed around 1925 by Brazilian brothers Carlos, Oswaldo, Gastão Jr., and Hélio Gracie, after Carlos was taught a hybrid fighting style of traditional Jujutsu and Kodokan judo by a travelling Japanese judoka, Mitsuyo Maeda, in 1917.

Brazilian jiu-jitsu became world famous because of the UFC, with the first champion being Rorion Gracie who showed the world that great technique can beat strength.

By Olivia Harrison!!



My sisters are with me.



This is me at the Auckland champs.

Year 9 FOOD TECHNOLOGY

Gourmet fish & chips were on the menu today for our Year 9 Food Technology class - yum yum! :)

The blue cod went down a treat - special thank you to Leah Jones and her Dad for kindly providing the fish! It was thoroughly enjoyed by all! :) Miss Hayman.



SCHOLASTIC BOOK FAIR HAS ENDED

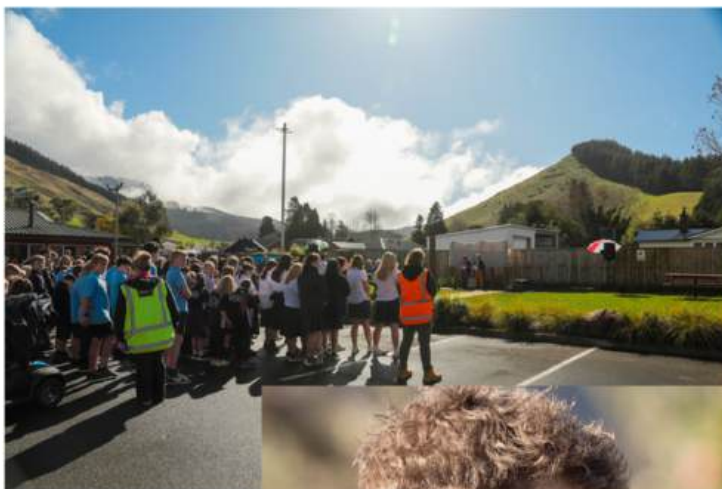


Thank you to all who supported the book fair this year. We had a wonderful dress up day full of enchanted characters. We hit our sales target and are able to purchase \$300 worth of books from the book fair.

Librarian Renee Jope







RVAS is limiting printing of the newsletter paper issues.

If you still require the paper copy please contact the school office on 03 5716016 or office@rai.school.nz

Whole School News

PET DAY 2024 UPDATE 30/8/24

PET DAY TROPHIES

If you have a Pet Day Trophy from 2023 please return to the office ASAP

PET DAY ENTRY FORMS

Thank you to those who returned Pet Day entry forms.

Do not stress if you don't know until Pet Day is closer we have a good idea of what is needed going forward for planning.

YEAR 11-13 STUDENTS:

Year 11-13 students will be in class for the morning but certainly invited to show us their skills and speed in the Young Farmer Competition. Year 11-13's can enter the Secondary Indoor sections on Wednesday.

PET DIARIES

Pet diaries were sent home on Monday, most of these require the students to fill in information over a 6 week period. These are a requirement if you are bringing a pet. They can be handed in with indoor entries.



OLD DESKS

**interested in having an old desk
or two for the kids bedroom??
Contact the office and ask for
further information.**

AFTER SCHOOL CARE

is available from 3pm to 5pm

Monday - Friday

contact the school office or

Skylar on 027 244 9390 to book in.

(Skylar does not have access to her phone from 8.50am-2.50pm)

\$5 per child per hour



Do you want to learn the guitar?

Interested in lessons?

When: Monday & Friday morning tea time

Where: In the VC room at the library

Cost: \$10 per session



If you are interested please talk to me Sophia Wiesner at school
or

email me on sophia.wiesner@rai.school.nz

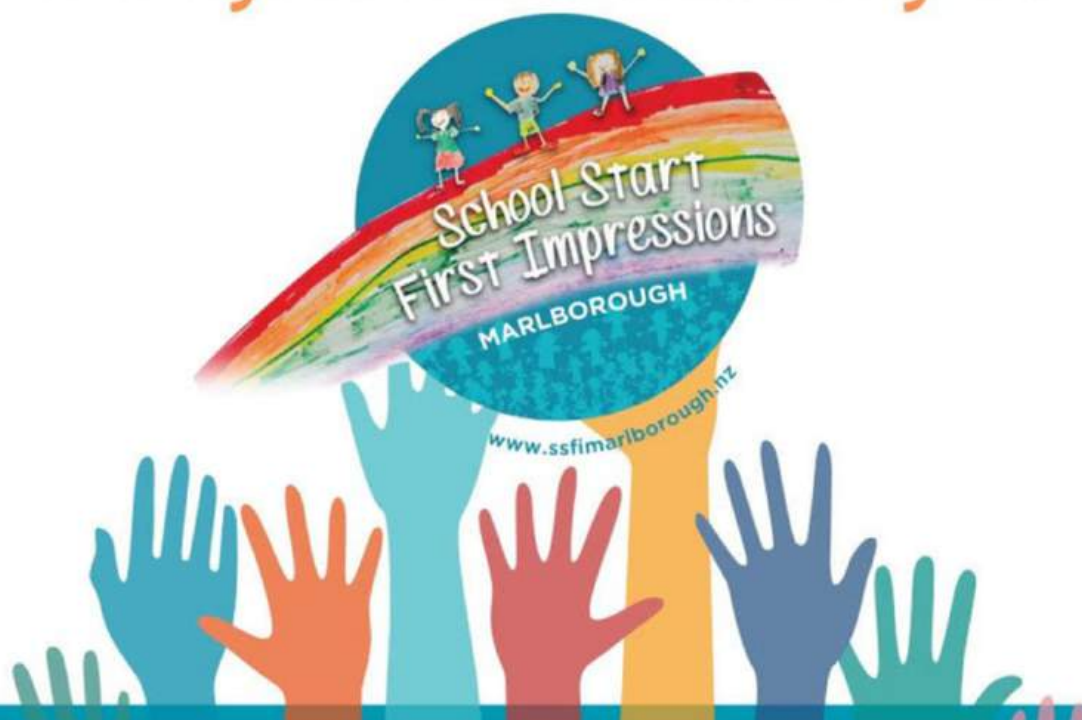
EMPOWER KIDS

ONLINE CHARITY AUCTION

31st August 12pm to 14th September 12pm

All proceeds raised go in to the boxes we supply to Marlborough's 5-year-olds starting school, who are facing severe hardship.

To bid go to: www.ssfimarlborough.nz



SAVE OUR SPECIES

WELCOMING COMMUNITIES

FREE
EVENT!

OPEN DAY!



DATE
Sunday 15th Sept



TIME
1.00pm-2.30pm



LOCATION
Pollard Park - by the Playground



This event is proudly supported by:



Join us for family fun, crafts, games and sample our Save Our Species events from across the year!



Turn up or Register here: www.envirohub.co.nz/event

🌿 NATURE BASED HOLIDAY PROGRAM 🌿

Kia ora Te Tauihu! Hello Marlborough!
We're thrilled to announce an exciting new holiday program full of **outdoor adventure, hands on activities, and nature connection.**

Activities include:

forest and beach scavenger hunts, driftwood hut building, creating animal enrichment, eco-friendly crafts, outdoor games, and learning about our local flora and fauna.

For ages 5-12yrs.

Run by a qualified primary school teacher and environmental educator.

We can't wait to connect with you and your tamariki this coming spring!

Go to
thewilderingnook.com/holiday-programmes/
to register, spaces are limited to allow a high adult to child ratio.

Ngā mihi nui
From the team at The Wildering Nook



The Wildering Nook



Wildflower World SPRING SEED FUNDRAISER

Help us grow by beautifying your garden

Fund Raising for RAI VALLEY AREA SCHOOL STUDENTS

Here is a great opportunity to purchase seeds to show your support. Seeds are easy to sow, fun to grow and will reward you with healthy veges and gorgeous flowers year after year.

We have some great choices - why not try them all. Prices are less than normal retail and our organisation will make 40% profit on all sales. Growing information is included on each packet of seeds.

To order please return this form with your payment no later than **MONDAY 23RD of SEPTEMBER**

Delivery will be on or after **1st October 2024**

Thank you for supporting this fundraiser.

All enquiries to **Renee Joep** : renee@rai.school.nz 027 7750 083

Seed Order Form 2024

Name: _____
 Address: _____
 Ph: _____

Seed Type	Price	Number	Total
Wildflower Bee Friendly Mix – 10 grams Wildflower seeds, the ultimate in colourful low maintenance gardening, providing essential nutrition for bees and other pollinating insects. Covers 10m ² . Hgt: 20-60 cm	\$9.50		
Summer Salad Mix – 1200 Seeds Eat Healthy and save money with our Summer salad. Inside you will find individual packs of Lettuce, Spring Onions and Radish to help bring your summer salads to life	\$7.10		
My First Flower Garden – 7 grams This easy-care wildflower seed mix is great for the first-time gardener, full of low maintenance easy care varieties. It's so easy! The perfect children's mix. Covers 7m ²	\$7.30		
Asian Greens – 1200 Seeds Make authentic stir fries and soups or just use in place of other vegetables. This mix contains Mizuna, Tatsoi and Chinese cabbage	\$6.20		
Micro Greens – 10 grams 'Micro Greens' is a term used for vegetables that are harvested at small seedling stage. They are a nutritious and tasty addition to salads. They can be grown any time of year, even inside during the winter.	\$7.70		
Sweet Pea – Summer Rainbow Mix – 20 seeds A colourful and fragrant mix of climbing sweet peas. Plant against a fence or trellis. Height up to 2 metres.	\$6.40		
Sunflowers – 20 seeds Sunflowers are a great way to add colour to your garden, and they're easy to grow and care for.	\$5.60		
Potful of Poppies – 7 grams A combination of different types of poppies that can be grown together to give an amazing colourful and easy to grow display. Three wildflower species have also been included to harmonise and blend. Height 40-80cm. Covers 7m ²	\$7.30		
GRAND TOTAL			\$

Please make payment to:

Rai Valley Area School 12-3165-0348666-000 reference : SEEDS24

Wildflowers Bee Friendly Mix

Plant wildflower seeds in your garden or patio pots to provide essential nutrition for bees.

Bees are vital for the pollination of many flowers. This mixture has been composed of flowers that are proven bee favourites in our gardens. Bees will forage on these flowers for nectar and pollen which provide carbohydrates and protein for growth and energy. Well-nourished bees are more capable of fending off disease and parasites.

fundraiser

14 grams - covers around 1 square metre

seeds supplied by
Wildflower World

Summer Salad Mix

Fundraiser

Wildflower World

fundraiser

My first
flower garden
wildflower
mix

Wildflower World

Potful of Poppies

fundraiser

7 grams - covers 7 square metres

seeds supplied by
Wildflower World

Micro Greens

fundraiser

Crispy texture and fresh flavour
for gourmet salads

seeds supplied by
Wildflower World

Summer Rainbow Mix Sweet Pea

20 seeds

fundraiser

seeds supplied by
Wildflower World

Sunflowers

20 seeds

fundraiser

seeds supplied by
Wildflower World

Wildflower World
fundraiser

Asian Greens.

**2 Weeks
left to get
your
orders in**



Positive Relationships

Whakawhanaungatanga

Means working and playing in safe and thoughtful ways with others.

THE KIWI CAN CORNER

Positive Relationships / Whakawhanaungatanga

Cooperation

Our younger Kiwi Can learners have been practising different ways to listen to others and care for each other's ideas, as we work in teams and cooperate. Our older tamariki have also been learning to share our ideas effectively and handle disagreement positively.

Why not try using these prompts at home to talk about this?

- ★ How do *you* cooperate to help keep our family safe, keep our home clean, and your belongings organised? What do you think would happen if nobody cooperated or helped out at home?
- ★ What's a successful team you can think of? When you think of this team, what *qualities* come to mind that makes them successful? How could you use some of those ideas to help a team you're in?
- ★ Is it ok to disagree with someone's ideas? How can you handle it *positively* when this happens?



Follow [@GraemeDingleFoundationMarlborough](https://www.facebook.com/GraemeDingleFoundationMarlborough) to stay up to date



RVAS Navy Soft
Shell Jackets In
Stock now \$70
each from the
office



Positive Relationships

Whakawhanaungatanga

Means working and playing in safe and thoughtful ways with others.

THE KIWI CAN CORNER

Positive Relationships / Whakawhanaungatanga

Cooperation

This week we're moving on to learning about cooperation. This will include exploring ideas about what cooperation *means*.

"It's cool to kōrero". Here are some conversation starters for this week:

- ★ What does the word "cooperation" mean to you? Can you tell me about a time today when you had to use your cooperation skills?
- ★ How do you think *listening* helps us to cooperate?
- ★ Imagine you are leading a group and someone in your team isn't doing their part. Can you think of some strategies you could use to get your team member to cooperate?
- ★ When sharing your views with others, what are some things to consider, to help it go well? (Using "I" statements, like "I feel..." is one example – how many others can you think of?)



Follow [@GraemeDingleFoundationMarlborough](https://www.facebook.com/GraemeDingleFoundationMarlborough) to stay up to date



School Wide News



Clay Class

After School Programme Term 3, 2024
Tuesday Classes 3, 10, 17, 24 September (3:15 - 4:45pm)
Supper Room Havelock Town Hall /Limited Spaces Available

Clay Class (8-12 year olds)
Taught by Renate von Petersdorff

\$85.00 per 4 week session
Email peloruskids@gmail.com for registration form

Proudly Supporting Our Pelorus Communities

& Pelorus Kids Creative



FOR SALE



VW GOLF TSI
14,000cc 139,000km
\$4200
Ph 027 343 0316

Carluka Domain Association AGM
Tuesday, September 17th 2024
1pm
At the Carluka Hall
All are welcome, see you there

Student Absence / Buses / After School Arrangements / Students arrive late / Parent deliver or collect students

Could you please notify Pauline, when required as soon as possible, at the school office regarding above issues with a reason, either by phone (03 5716 016) and leave a message or by email (office@rai.school.nz) or personally to the office.

This allows up-to-date recorded information for emergencies.

If students are late at school or leaving during school hours:
Parents need to sign in or out at the school office.

Thank you in advance.
Pauline



DUFFY CHAMPION
DUFFY CHAMPION
DUFFY CHAMPION
DUFFY CHAMPION
DUFFY CHAMPION



CONGRATULATIONS
 Bex Nicol for being our latest Duffy Champion. Bex runs a local pre-school and is mum to Stanley in Year 1. She visited our Book Fair and brought some books for the pre-school tamariki, so we added to their library shelf a beautiful kete of kiwi stories by the talented June Pitman-Hayes which also have sing-a-longs.

Up & Coming Key School Dates for 2024

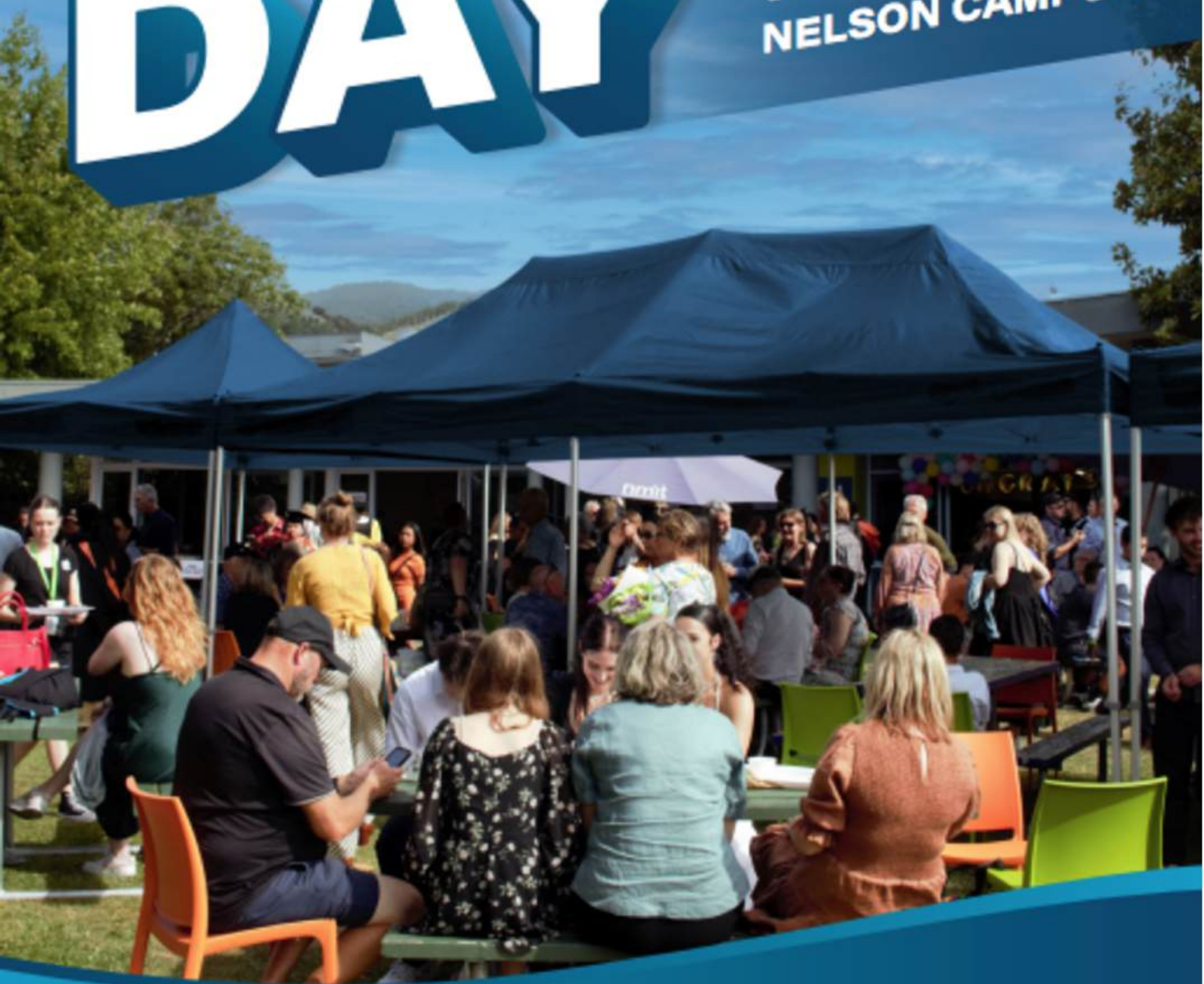
Monday 9th September	T3W8	Maud Island trip
Wednesday 11th September	T3W8	Student BOT Elections
Thursday 12th September	T3W8	Bricks in Schools
Monday 16th September - Friday 20th September	T3W9	Derived Grades EXAMS - Seniors MONDAY - PM - L2 MATH TUESDAY - AM - L2 ENGLISH TUESDAY - PM - L1 MATH WEDNESDAY - AM - L2 CHEMISTRY WEDNESDAY - PM - L1 ENGLISH THURSDAY - AM - L2 PHYSICS
Monday 16th September - Friday 20th September	T3W9	CAA's Monday - Reading Wednesday - Numeracy Thursday - Writing
Wednesday 18th September	T3W9	BOT Meeting
Monday 23rd - Friday 27th September	T3W10	Y9 & 10 Camp @ Lake Rotoiti
Wednesday 25th September	T3W10	Jazz Band visit
Friday 27th September		Term 3 ENDS
Monday 14th October		TERM 4 BEGINS - Whole school 8.45am
Wednesday 16th October	T4W1	Pet Day Indoor
Thursday 17th October	T4W1	Pet Day Outdoor
Monday 28th October	T4W3	Labour Day
Monday 4th November	T4W4	Marlborough Anniversary
Tuesday 5th November	T4W4	NCEA exams start
Friday 8th November		Y5-8 Ki-o-rahi Tournament
Friday 15th November	T4W5	TEACHER ONLY DAY - WHOLE SCHOOL
Monday 25th November	T4W7	TEACHER ONLY DAY to be confirmed
Thursday 5th December	T4W8	Pelous Cluster Top Team @ RAI VALLEY
Monday 9th December	T4W9	Prize Giving - WHOLE SCHOOL
Tuesday 10th December	T4W9	Term 4 ENDS

NMIT OPEN DAY

FREE EVENT
AND PARKING

SATURDAY
21 SEPTEMBER

10AM – 2PM
NELSON CAMPUS



Find out more info at
nmit.ac.nz/open-day

nmit

NMIT is a Business Division of Te Pūkenga – New Zealand Institute of Skills and Technology.

2/09/2024 Dear resident/business operator

State Highway 6/Lower Queen Street lights, Richmond: night-time resurfacing

Maintenance of the road surface at several sections of State Highway 6 Gladstone Road between Richmond Deviation and Church Street is planned between Sunday 22 September and Thursday 10 October 2024 from 8pm to 7am, Sunday to Thursday nights. No work will take place on Friday and Saturday nights.

Stop/Go controls and a temporary speed limit of 30km/hr will be in place on SH6 between Richmond Deviation and Church Street. During work times, direct access from SH6 into McGlashen Avenue will be closed. In addition, access from Lower Queen Street to Queen Street will also be closed. The recommended access to these locations is via Oxford Street, Cambridge Street, Queen Street and McIndoe Place.

During the work there will be times when:

- Road users will not be able to turn right from Lower Queen Street onto SH6 southbound (towards Three Brothers Corner).
- Road users will not be able to turn left from SH6 northbound (towards Nelson) onto Lower Queen Street (towards Motueka).

During this time road users will need to use McShane Road and SH60 Appleby Highway as an alternate route. Road users will be guided by signage at the work site.

On Sunday nights there will be stop/go temporary traffic management in place for road users turning left from Lower Queen Street onto SH6 Richmond Deviation, northbound (towards Nelson). All road users must plan ahead and allow for a delay of up to 20 minutes during the works.

Following completion of the asphaltting at all locations, night works to reinstate the line-marking at the site will be undertaken with stop/go controls and a 30km/hr speed limit.

For your safety and the safety of our road crews please drive carefully and stick to the temporary speed limits through these sites.

All work is subject to weather and other unforeseen circumstances. In the event of unsuitable conditions, work will be rescheduled to the next suitable night. For confirmation of planned work going ahead each night, road-users can visit www.journeys.nzta.govt.nz

If you would like to speak to someone while work is in progress, please contact:

Fulton Hogan: Nick Oliver Ph: 027 684 1384

Fulton Hogan: Mario Lunjevich. Ph 027 247 7376

While we always aim to do our work with as little disruption as possible, we know that roadworks can be a hassle. We apologise in advance for any inconvenience this may cause you.

On behalf of the NZ Transport Agency, thank you in advance for your patience and understanding while we do this important work in your community.

Use the camera on your smartphone to scan the QR code for up-to-date information on the NZTA Journey Planner during the scheduled works.



Harcourts

MARLBOROUGH KIDS DUATHLON

Sunday 20th October
BRANCOTT ESTATE VINEYARD

The Harcourts Marlborough Kids Duathlon is a multi-sport event for kids aged between 6 -18 years from all around the Marlborough region. With both short and long course options, the duathlon is all about having fun, getting out with your friends and giving it a go!



RACE
ONE

6-18 YEARS

RUN 1KM
BIKE 3KM
RUN 1KM

RACE
TWO

6-18 YEARS

RUN 2KM
BIKE 5.5KM
RUN 1KM

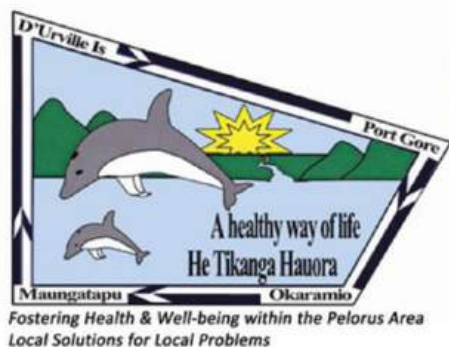
BEAT THE
BEAR

4-7 YEARS

500m RUN

ONLY 500 PLACES! REGISTER NOW AT

KIDSDU.CO.NZ



Pelorus Area Health Trust

What is happening in our Pelorus Community Lounge:

Harakeke Hub

Every 2nd Tuesday of the month, 2.30-4.00pm. A chance to connect.
Just bring yourself and meet up with others for cuppa, cake and chat!!

PSUI Alzheimer's Support Day

Every Monday the Lounge is used for a group who get support, activities, morning and afternoon tea and lunch.

Cancer Society Counselling Sessions

Once a month the Cancer Society provides a counselling session for those affected by a cancer diagnosis

Hot Soup Run

Every Friday hot soup is served with a bread roll and a sweet treat, either delivered to those who would like it in their own home, or served in the Community Lounge

Community Group Meetings

Different community groups meet in the lounge on a regular basis from the local Knitters Group to the Havelock Lions

Health Drive Sessions

Different health practitioners can use the lounge to run a drive on a particular health issue whether it be a vaccination clinic or a session on elder abuse

Health & Well-being Information Centre

One corner of the lounge is dedicated to information on anything health and well-being. Pop in anytime to grab a pamphlet on a health issue that concerns you.

Drop-in for a Cuppa, a chat or some assistance

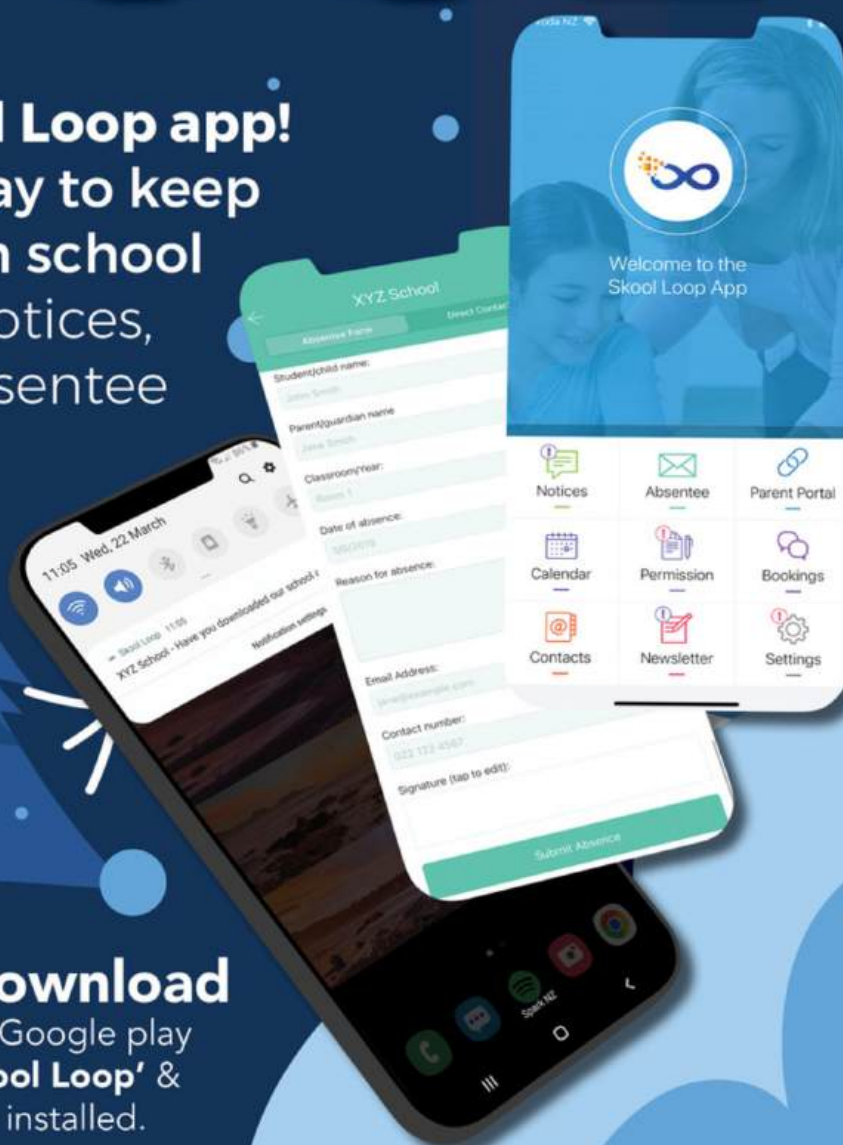
The Community Lounge is available for anyone who needs some assistance, a download or a cuppa.

Check our website www.PelorusAreaHealthTrust.co.nz for more information and like us on Facebook facebook.com/CharitableTrustHealth

We need more volunteers for our 2 Charity Shops and in our Community Lounge. Half day shifts or whole day shifts available.

Keeping It COOL

With our Skool Loop app!
Download today to keep
up to date with school
information. Notices,
newsletters, absentee
notifications
and much
more.



Simple free download

Scan the QR code or In Google play
& App Store search '**Skool Loop**' &
choose our school once installed.





Kurt Lindsay 027 469 9685
kurt.lindsay@bayleys.co.nz

NO.1 BAYLEYS MARLBOROUGH SALESPERSON 2016/2017 TOP 5% OF BAYLEYS SALES PEOPLE 2016/2017

KURT LINDSAY TEAM. BAYLEYS



Havelock

4 FOUR SQUARE SUPERMARKET

68 MAIN RD, HAVELOCK. PH: 03 574 2166

Pelorus Bridge Cafe & camping ground

Proudly Supporting Rai Valley School & Community

03 5716 019

GJ CURRIE ELECTRICAL

027 439 4606 • greg@pelorusvalley.co.nz

PO Box 52, Havelock 7150



TAOSTING ROOM

Thursday 11am-3pm
Friday 11am-8pm
Saturday 11am-3pm
Sunday 11am-3pm

23 Inglis St, Havelock
Phone: 03 574 2575

Mills Bay MUSSELS

www.millsbaymussels.co.nz

RAI VALLEY MOTORS

Proprietors: Phillip & Kelly Hawkins

OPEN 6 DAYS

PETROL - DIESEL - OIL
AA MEMBER - ENGINE RECONDITIONING
& WELDING - CHAINSAWS
LAWNMOWERS - GENERAL ENGINEERS

Main Road, Rai Valley

☎ 571 6014 A/H 571 6105



THE MILLERS REST
RAI VALLEY

BAR & RESTAURANT

BOTTLE STORE

Rai Valley Brick Oven Cafe

Our Specialties:
Country Fried Chicken - Catering
Coffee - Takeaways - Groceries

Homemade Food At It's Best
Proudly Supporting Rai Valley School

Ph 571 6005

VETS ON ALABAMA

RURAL & URBAN
VETERINARY SERVICE
OPEN 7 DAYS
Mon - Fri: 8am - 5:30pm
Sat & Sun: 8am - 1pm

OPEN TILL 7PM WEDNESDAY

PH: (03) 578 6965
www.vetsonalabama.co.nz

165 Alabama Rd, Blenheim


FRENCH PASS STORE

Groceries, meat, fresh fruit
& vego, Bait, tackle, ice,
Coffee, hot/cold food & drinks.

EFTPOS, OPEN 7 DAYS.
PH 022 439 6171

VENUE HIRE

PHONE 03 651 0050

 themillersrest

TNL

TNL supports the safety
of children sharing our
road network in
communities throughout
the Tasman region

B careful
B bright
B seen
B safe

Phone Carl Harris Branch Manager (03) 571 6118
AH (03) 571 6066 E carl.harris@tnl.kiwi

Marlborough Helicopters

Marlborough Helicopters Ltd

Spraying, topdressing, lifting
and air transport

Office & A/H (03) 578 9684

rem LTD

Phone 03 571 6129

- General Engineering/Aluminium/Stainless
- Full Mechanical/WOF/MTA
- Hydraulics/Sales & Service/Mobile Truck
- Remquip/Forestry Equipment (Satco)
- Storage/Lockup

www.remgroup.co.nz

6781 STATE HIGHWAY 6
03 571 6325

STORE MANAGER
KRISTIN ALDRIDGE

NEW ZEALAND FARM SOURCE

Delivering for life



EXCAVATION

- LICENSED DIGGER OPERATOR
- RELIABLE & EFFICIENT LATE MODEL EXCAVATOR
- POLEHOLE BORING • TILT & GRAPPLE BUCKETS
- TOPSOIL • SAND • AGGREGATES
- SLIP REMOVAL & STORM DAMAGE REPAIR
- SITEWORKS & EARTHMOVING
- TRENCHING • DRIVEWAYS

CONSTRUCTION

- LICENSED BUILDING PRACTITIONER
- RETAINING WALLS
- POLESHED / FARMSHED CONSTRUCTION

ADRIAN MARTIN:
027 274 2008 OR A/H: (03) 571 6327
me@smeltd.co.nz