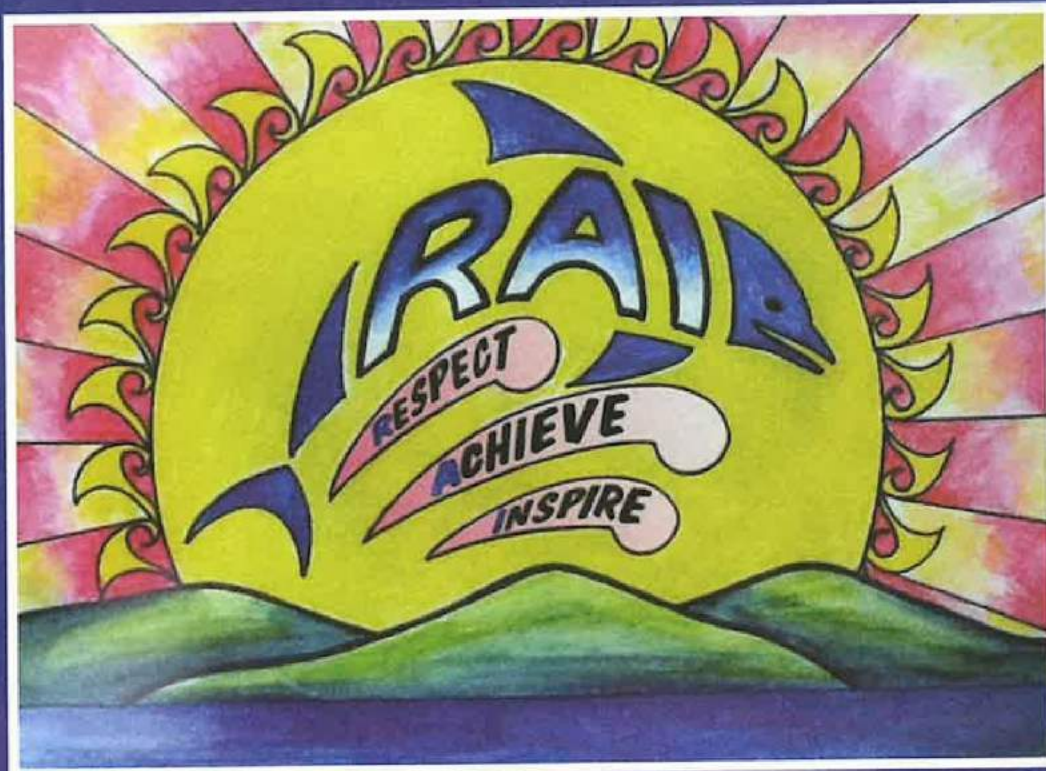




Rai Valley Area School

Newsletter



Rai Valley Area School
**Growing and Learning
Towards a Great Future**

Phone: 03 571 6016
Email: office@rai.school.nz
www.rai.school.nz

Rai Valley Area School

Newsletter

	Issue No.7 21st June 2024	
--	-----------------------------	--

Tumuaki's Report



Kia ora koutou

We have had a lot of illness in the last couple of weeks. We have had staff and students absent with several nasty stomach and flu bugs doing the rounds. COVID is also active in our community. This term we have been fortunate to be able to get relievers which has meant that we have not had to send students home

It has been a really busy few weeks. Haoura Health Day was a great day with lots of great sessions. Well done, Mr Waldie and his team for their hard work in organizing a great day. Mrs Waldie took Harriet Leov, William Waldie, and Sophie Thompson to Watapia Bay for the Pelorus Speech Competitions. All our students performed well with Sophie being named the overall Year 7 winner.

The Year 10-13 students have an informative day in Blenheim at the Future of Work conference. This was a great opportunity to see what some of the career options are for them. Last week the Year 6-8 classes visited Te Hora Marae as part of the group of Pelorus schools. It was a great experience for our students. This Thursday as a school we will celebrate the bedding of Matariki with many activities throughout the day.

Our Details:

Rai Valley Area School

6700 SH6, RD 2 Rai Valley

Marlborough 7192

Telephone: (03) 571 6016

Email office: office@rai.school.nz

Web address: www.rai.school.nz

Our People:

Principal: Maree Furness

Primary Leader: Karen Davies

Secondary Leader: Dan Waldie

Primary Senco: Jennie Brook-Watt

Secondary Senco: Eli Briasco

Learning Support Coordinator: Theresa Neal

Executive Officer: April Morris

Receptionist: Pauline Agnew

Caretaker: Shane Dearman



Tumuaki's Report con't



Thank you to the senior girls who did an amazing job of organising and running the junior disco last Wednesday. It was a successful evening.

In recent weeks teachers have been busy writing the half-yearly reports. Report night for Years 7-13 has been moved to Tuesday 2nd July from Tuesday 25th June due to staff illness. Secondary reports will be posted on Tuesday 25th of June and primary reports will be posted on Wednesday 3rd of July. If you have queries or questions please do not hesitate to contact your child's teacher.

On Friday we received information from the Ministry of Education about a potential measles outbreak. This week Pauline will be ensuring that our immunisation records are up to date and accurate. If there was a measles case within the school we would be advised on our next steps by the Public Health Department.

Noho ora mai

Maree



Students at the Marine Farm Maintenance Ltd site learning about Green Lip mussels and Aquaculture

Students at the Sounds Air site learning about flying planes.





Greetings everyone.

Our board of events in the staffroom still looks full as we run-down to the end of the term. In primary we have Matariki to look forward to this week and a visit from the Life Education Mobile classroom to complete things at the end of next week. They are coming on Thursday and Friday. This is part of our Health curriculum and is always welcomed by the students and teachers.

The year 6,7 and 8's visited Te Hora Marae last Thursday for a unique experience with all the other students of this age group from our cluster schools. Thanks to everyone involved, including Renee for making our part of the meal we donated and Mr Davies for some great washing up of all the dishes!

On Wednesday, Mr Briasco has entered us in the Jumping June skipping activities to help raise funds for the National Heart Foundation. Wednesday is the morning we show off our skipping skills. Each child has their own rope and these can come home in the holidays. Encouraging more skipping is great exercise for fitness. Running over the holidays would be great too when the kids need to get outside. Pelorus Cross Country is the first Friday back in the third term.

We are going to trial some 'whanau' rooms in the early mornings to keep our students warm and safe. This is mainly for students who have parents as teaching staff, who need to be in briefings and earlier meetings. Buses arrive between 8.20 and 8.30am and as we do not have other staff on duty it would be good if your own child/ren arrived at school about this time also and not too much earlier. Children will be supervised by older students, who can come quickly to the staff room for further support if needed.

I look forward to seeing some of you on Thursday, for our Matariki celebrations. In the afternoon there is a Kī o rahi challenge between students and staff, with a brand new trophy to be awarded. Come along and show your support.

Regards,
Karen Davies

RVAS is limiting the printing of the Newsletter paper issues.

If you still require the paper copy please contact the school office
office@rai.school.nz | 03 571 6016





Eddie Neal - Km 13

One day I went to the beach. ~~Person~~ The person had a red beanie and a umbr. The umbrella ^{is} was inside out because it was so windy.



5.6.24(5)

The sky was dark and cloudy with a little bit of blue sky shining through.

Well done Eddie

an - a e i o u
beach beanie of off
a bit of get off!

Mason Church - Km 13

Once upon a time there was a boy. The boy had a green jacket and the sand was drawn and he had a red hat too. The umbrella was inside out because the wind was so strong.



Secondary News



Kia ora,

We are almost there, just a few more days to tick off then we all (hopefully) will get a well earned rest.

Many thanks to the community who supported our hauora day, it was a huge success and the students all gained invaluable knowledge and skills which I am sure have already come to fruition. We are already looking at next year's event and are keen to make it even bigger and brighter (and hopefully open it up to all of the school community).

Last Monday also saw the secondary school teachers (and Ms Massey) go on a road-trip to Reefton where we got to learn all about "the Science of Learning" and meet up with other Area School colleagues to share ideas, resources and get some invaluable moderation done.

The upcoming weeks are still filled to the brim. Reports will be out soon (Secondary reports will be coming home with your children), and next Tuesday 2nd we will be hosting our Parent teacher Conferences for students in Years 7 to 13. Booking can be made through skool-loop. If you have issues accessing this feel free to contact the office or myself (dan.waldie@rai.school.nz).

Thursday will see our whole school matariki festival and we are all looking forward to harakeke weaving, some mindfulness activities as well as inter house haka and Ki-o-Rahi.

Also if you are keen to play on Thursday in a senior students vs community game of Ki-o-Rahi please let us know.

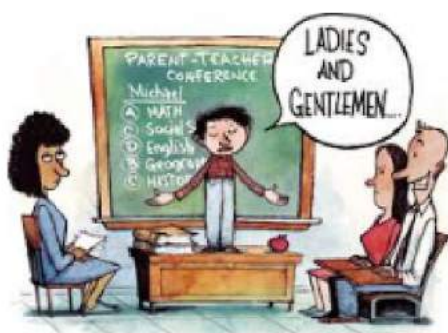
nga mihi nui

Dan Waldie
Head of Secondary.



Thank You to Shane, Mrs Stuart , Mrs Ballantyne, Mrs Brooke-Watt for helping us run a successful Junior Dance Event to help us gain credits for NCEA.

Skyla Ballantyne, Kayla Gardiner, Kaytie Mulholland and Courtney Thorpe.



Parent - Teacher - Student Conferences for Years 7-13 are to be held on Tuesday 2nd July 2024 in the library from 3.15pm - 6.30pm.

Jump onto the Skool Loop app and select your school, teacher and times





Thank you!

We would like to take this opportunity to say thank you very much to the following organisations and individuals for their financial support of Keegan and Tessa, our two RVAS students heading to Te Awamutu in July for the National Area Schools Sports Tournament:

Keep Fit Havelock
Mount Ronga Ltd.
Vercoe Insurance
C Somerville
K Somerville
J Sorensen (Ms S!)
Lions Club Tauranga



Thank you also to those sponsors who wish to remain anonymous.
We really appreciate your support!

--
Eli Briasco
Secondary SENCO, English and Physical Education Teacher
Rai Valley Area School



So far our kids have raised a **whopping \$2217** for the Heart Foundation as part of Jumping June! Thank you to everyone in the community who has donated. It has also been fantastic to see so many of our ākonga practising their skipping at morning tea and lunchtime this month.

We will be having a short Jumping June Event, involving Years 1-10, this Wednesday 26 June at 11.25am. Parents, whānau and caregivers are welcome to come along and skip with us!

--
Eli Briasco
Secondary SENCO, English and Physical
Education Teacher

**RVAS Navy Soft
Shell Jackets In
Stock now \$70
each**





Hauora Health Day



Term 2 has been a fun filled, creative and competitive time in Food Technology, for both Year 9s and Year 10s.

In week 8, the Year 9s competed in a Masterchef competition, where each group had 80 minutes to prepare, cook and plate up two dishes - one main and one dessert. They had class time in week 7 to create, plan and organise their recipes and necessary ingredients, so each group could maximise their time cooking during the competition. It was great to observe everyone enjoying this competition (albeit a bit stressful with a ticking clock!) and demonstrating their skills in the kitchen.. All four groups successfully plated up their two dishes for the guest judges to taste test, mark and give verbal feedback. Thank You to our judges who joined me: Haley Kiddey, Theresa Neal and Tessa Zillwood. Results will be revealed in week 10, but you can all be proud of your efforts!





For the majority of this term, the Year 10s have been competing in a My Kitchen Rules competition. With a partner, they had to select a specific culture for their theme (Australian, New Zealand, Asian, Mexican were the chosen themes) and bring their 'theme to life' on their designated cooking week. Each pair had time to plan, prepare, shop online for their ingredients within a certain budget, create a visual poster on their cultural theme and cook their two dishes (they could choose either an entree or a dessert, alongside a main). Their last task was to plate up their dishes for everyone in the class to taste, mark and give feedback on their efforts. A special thanks to our guest judge each week, Renee, we really enjoyed having you join in the fun! Results will also be revealed in week 10.

Our Year 9s and 10s also prepared morning tea and afternoon tea for the Hauora Health Day in week 6. The students cooked and baked some of the dishes we have been making in Food Technology this term and we plated it up for all to enjoy. I know the delicious spread was appreciated by the staff and community. Thank you again for your efforts, Year 9s and 10s.

Year 10 MKR

Sarah Hayman
Food Technology Teacher



New Zealand theme - Jackson Jenner & Cooper Knight



Asian theme - Ana Harrison



Australian theme - Tessa Zillwood & Brooke Dow

Mexican theme - Bella Hickson & Rhyder Dearman
(cooking in week 9)





Flax weaving

The Haka Off

House groups

Ki o rahi games

House groups

Students v teachers/community

Rai Matariki-Burgers

MATARIKI

27 June 2024

9.30 – 2.45

Come and join us



Student Absentee / Buses / After School Arrangements /
Students arrive late / Parent deliver or collect students - May 2024

Could you please notify Pauline, when required as soon as possible, at the school office regarding above issues with a reason, either by phone (03 5716 016) and leave a message or by email (office@rai.school.nz) or personally to the office or by a written note (boomerang book).

This allows up-to-date recorded information for emergencies.

If students are late at school or leaving during school hours:
Parents need to sign in or out at the school office.

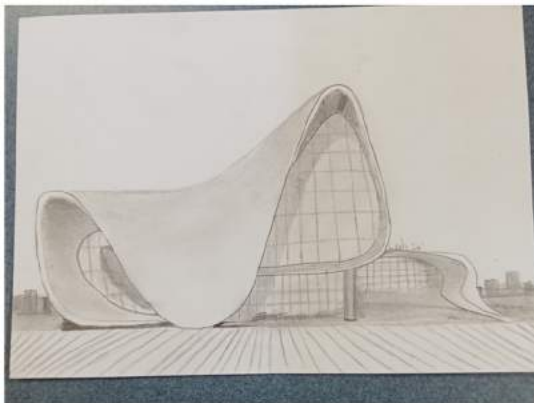
Thank you in advance.





Up & Coming Key School Dates for 2024

Wednesday 26th June	T2W9	Jumping June Skip Off
Thursday 27th June	T2W9	RVAS Matariki Celebration
Friday 28th June	T2W9	Matariki - NO SCHOOL
Wednesday 3rd July	T2W10	Primary School Dance 5-7pm
Thursday/Friday 4th-5th July	T2W10	Life Education Bus onsite
Friday 5th July	T2W10	Term 2 ENDS
Monday 22nd July	T3W1	TERM 3 BEGINS - Whole school 8.45am
Friday 27th September		Term 3 ENDS
Monday 14th October		TERM 4 BEGINS - Whole school 8.45am
Monday 28th October	T4W3	Labour Day
Monday 4th November	T4W4	Marlborough Anniversary
TBC		Term 4 ENDS



By Leah Jones



Shells by Sophia Wiesner



Shark by Maddy Sharpe





Grants for insulation and heaters

for a warm & healthy home

EECA



The easy process will soon leave you with the benefits of a warm, dry home:

- A more comfortable space for whānau, visitors and those living in the home
- A drier and healthier home with reduced sickness
- Reduced energy use from an efficient heater



"Our place is so much warmer and drier, it's made a huge difference"

Warmer Kiwi Homes

Grants for insulation and heaters

The Government is offering *Warmer Kiwi Homes* grants to make Kiwi homes warmer and healthier.

Grants cover:

- 80%-90% of the cost of ceiling and underfloor insulation
- Up to 80% of the cost of an efficient heater in the main living area.

Grants for heaters are capped at \$3,000. Eligibility and Conditions apply.



"When the moko come over it's warm, comfortable and dry"



"For us it was about having the house warm and dry for the kids"

You may be eligible if you own your own home and:

- have a Community Services Card
OR
- live in a lower-income area
AND
- your home was built before 2008.

What happens next?

- Visit warmerkiwihomes.govt.nz or free phone 0800 749 782 to find out if you are eligible and for more information.
- A service provider will visit your home to check whether you need insulation and a heater.
- If everything is approved, arrange a day and time to have insulation or a heater installed.



EECA TE TARI TAKO PĒNGAO
Environmental Protection Authority

For help through the process, contact the service provider below



0800 423 454
www.absoluteenergy.co.nz

You can also free phone
0800 749 782 or visit
warmerkiwihomes.govt.nz

To Kāwanatanga o Aotearoa
New Zealand Government

August 2023 / EEO502



Resilience *Taikaha*

Means coping
with challenges
and bouncing back.

THE KIWI CAN CORNER

Resilience / Taikaha



In Kiwi Can we're learning more about ways to cope with challenges – including when and how to ask for help. With our older tamariki we are also exploring strategies that help us deal with challenges that may affect our peers.

Some conversation starters for this week:

- Can you think of a time that you had to ask for help? What was the challenge? Who did you ask? How did you feel?
- Who are some good people for you to turn to if you need help with a challenge – in class? In the playground? At home? At a party? Up town?
- How did you help someone with a challenge today?
- What are some challenges we could face at school that could affect our friendships? How can we respond to those challenges?
- Do you know anyone you admire that has faced a big challenge? (It could be a book character or in real life). How did they face their challenge?

 Follow [@GraemeDingleFoundationMarlborough](https://www.facebook.com/GraemeDingleFoundationMarlborough) to stay up to date



Resilience *Taikaha*

Means coping
with challenges
and bouncing back.

THE KIWI CAN CORNER


Resilience / Taikaha



Life is full of challenges, so how can we help prepare our children to take on those challenges and succeed? In Kiwi Can we're learning more about **dealing with challenges** – starting with identifying the sorts of challenges that might affect us or other people.

Some ideas to discuss at home...

- Challenges are a normal part of life faced by everyone. What challenges do you imagine a teacher might face? Or a parent?
- What is something *you* found challenging at school this week? When you find something challenging or hard, what can you do?
- What do *you* say to yourself when things don't go right, or you make a mistake?
- Should people make their children have easy lives with few challenges - or make sure their children face challenges? Why?
- What kind of challenge would *you* like to try?

 Follow [@GraemeDingleFoundationMarlborough](https://www.facebook.com/GraemeDingleFoundationMarlborough) to stay up to date



SCHOOL START FIRST IMPRESSIONS
MARLBOROUGH

EMPOWER KIDS CHARITY DINNER

THE FANCY COW
31 AUGUST 2024
6PM-10PM

Drink on arrival

Canapes

Grazing Boards

AMAZING SILENT & LIVE AUCTIONS

Tickets \$110 each OR Group of 8 for \$800

Return Transport ticket option \$20

To book visit www.ssfimarlborough.nz





MARLBOROUGH
NETBALL

SCHOOL HOLIDAY PROGRAM 2024

YEARS 3-4

9th JULY

YEARS 5-6

16th & 17th JULY

YEARS 7-8

10TH JULY

Fun netball activities to suit all skill levels

COST: \$25 per child per day

TIME: 10:00am - 2:00pm

LOCATION: Lansdowne Park (netball courts)

REGISTRATIONS THROUGH SPORTY

<https://www.sporty.co.nz/viewform/299026>

**PLEASE BRING LUNCH, WATER BOTTLE,
SUITABLE CLOTHING, SHOES AND A SMILE**



We are excited to announce that Whakatū Girls Rugby Trust is holding one of our fun camps in Blenheim over the upcoming school holidays! We'd love to invite students from your kura to join us. These holiday camps are for girls who currently play rugby and for those that may be keen to give it a go in a safe environment.

WGRT Girls Rugby Camp

July 8-9, 9:00-3:00 each day

Marlborough Girls College

\$60.00



Registration in a WGRT Camp includes morning tea, lunch, and afternoon tea, along with some awesome WGRT gear! All levels of players welcome, ages 8-18.

Cost will not be a barrier to participate in our WGRT Camps. We do have scholarships available. Please email us to enquire about a scholarship on admin@whakatugirlsrugbytrust.org.nz.

☐ Use this link to register today!

<https://www.eventbrite.co.nz/e/whakatu-girls-rugby-trust-girls-rugby-camp-blenheim-registration-922711584187>

Kia Ora,

My name is Tahlia Armstrong and I am excited to be starting up in home care here in Rai Valley!

I currently have spaces available from Tuesday to Friday. Let me know if I can help. Give me a call, 0221367920.



Community News



A spectacular alpine experience where everyone's welcome!

Open 7 days (weather/snow permitting)* approx. July – October
1.5 hrs drive from Nelson or Blenheim, 40 mins from St Arnaud village

- ☀ Family friendly skifield for all abilities
- ❄ Shuttle bus service from base carpark**
- 🌿 Range of ski pass options
- ❄ Equipment and clothing hire
- ❄ Ski and snowboard lessons
- ☀ Terrain park & backcountry access
- ❄ Fully licensed café & retail shop
- 🌿 First aid and emergency services



*Please check our website or social media for conditions on the day of your visit.

**For those without snow chains, there is a pre-bookable shuttle bus service with multiple daily trips from the base car park to the Ski Area.

Rainbow Ski Area is on DOC Conservation Land. Please leave your dogs at home.





Marlborough Roads



BRIDGE CLOSURE

We're working in your area

What: Daltons Bridge Abutment Repairs

Where: Daltons Bridge, at the western end of Kaiuma Bay Road

When: From **Monday 1 July 2024** for a period of approximately six weeks.

This closure will be in place for 24 hours a day, 7 days a week.

Contact: Marlborough Roads Recovery Team 03 579 4253

Site Supervisor: Sam Terris 027 312 0000

Zone Manager: Anthony MacKay 027 555 9434

Details: From **Monday 1 July** Dalton's Bridge will be **closed to all traffic** to allow for bridge abutment repairs.

This closure will be in place 24 hours a day, 7 days a week, for approximately six weeks. A detour will be in place via Te Hoiere Road during this closure.

Please note Daltons Bridge is **currently closed to heavy vehicles over 3500kg**. A detour via Te Hoiere Road is in place for all heavy traffic.

Thank you for your patience as we undertake these important works.





Vetlife

Animal Health Partners

Vetlife is a large, privately owned, veterinary practice with 26 branches throughout the South Island. Vetlife Rai Valley is a new retail store and will offer a full range of veterinary retail products to the surrounding community for both production and companion animals. We currently have an opportunity for a Retail Manager to join our soon to be opened retail store in the Rai Valley.

The successful applicant will have excellent customer service skills with the ability to build relationships and grow a developing business and will be an integral part of the wider Vetlife team, working to provide retail support to the surrounding community.

This is a part time position with some flexibility.

About the role:

This is a new retail store, and the successful applicant will have the opportunity to be part of developing a Vetlife presence and successful retail outlet in the Rai Valley whilst working closely with the Territory manager to develop relationships with our production animal clients, providing support and product for their farming requirements.

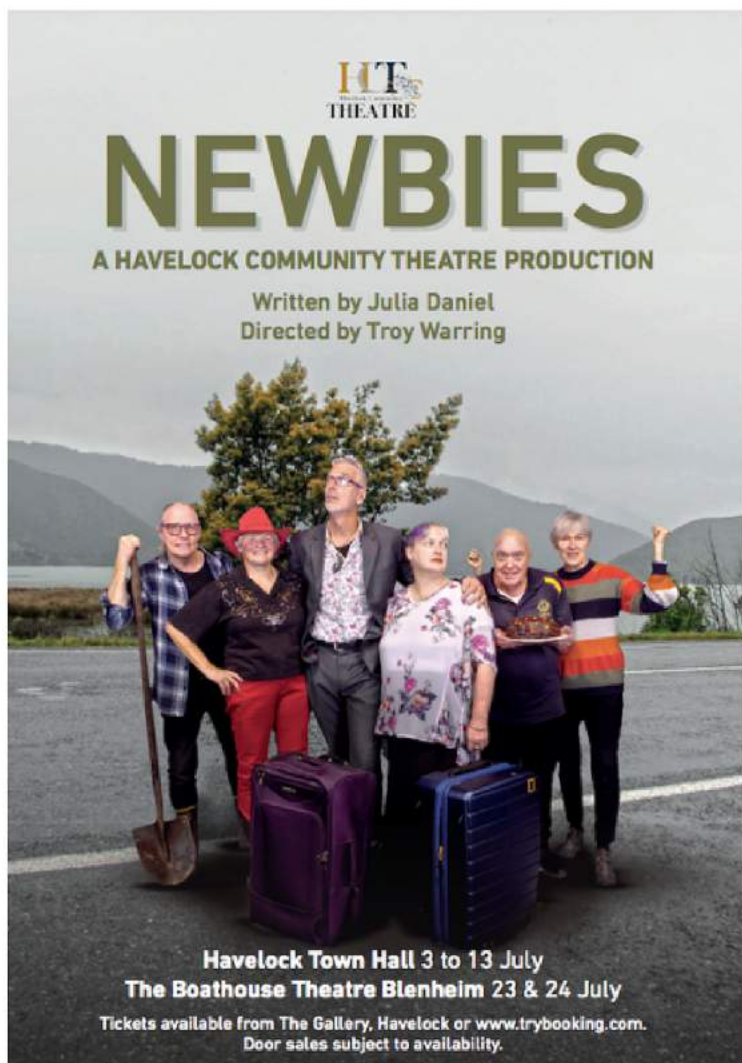
- Key role in growing the store
- On farm deliveries/visits
- Provide retail support to clients
- Store management including, product displays, data entry and processing payments, inventory, H&S

Key attributes for this position are:

- Veterinary clinic or production animal background would be an advantage combined with sound product knowledge
- A friendly confident personality combined with an excellent telephone manner
- Ability to communicate and build relationships with our valued client base, the local community, and colleagues
- Confident with IT systems
- An eagerness to learn and an ability to prioritise and adapt quickly to change

If you would like to know more about this opportunity, please email rachel.inch@vetlife.co.nz or phone Rachel Inch 027 233 7378





HCT
Havelock Community Theatre

NEWBIES

A HAVELOCK COMMUNITY THEATRE PRODUCTION

Written by Julia Daniel
Directed by Troy Warring

Havelock Town Hall 3 to 13 July
The Boathouse Theatre Blenheim 23 & 24 July

Tickets available from The Gallery, Havelock or www.trybooking.com.
Door sales subject to availability.

Havelock Community Theatre presents...

Newbies

In this locally-written comedy, Aucklanders Jasmine & Kurt find themselves accidentally living in Havelock. How did that happen?

But more importantly, how soon can they leave?

Throw some quirky neighbours into the mix, along with some surprise visitors, and things quickly go from bad to worse.

Havelock Town Hall

Wed 3rd - Sat 6th July, 7:30pm

Sunday 7th July, 2:00pm

Thurs 11th - Sat 13th July, 7:30pm

Tickets available from The Gallery Havelock & www.trybooking.com

Door sales subject to availability

The Boathouse Theatre, Blenheim

Tues 23rd & Wed 24th July, 7:30pm

Tickets available from www.trybooking.com

Door sales subject to availability

Tickets: \$20 adults, \$15 seniors/students, \$10 children

HCT
Havelock Community Theatre
www.havelocktheatre.nz



KEEP FIT HAVELOCK

"SWEAT. SMILE. REPEAT"

WWW.KEEPFITHAVELOCK.COM





Any age Kids

Animal Care distance Class 101

With
Certificate

10 TOPICS

The BIG Picture, The Essentials,
What goes in must come out, The Rules, Pets Bubble,
Vaccine saves lives, Own Pet Check, Staying safe and more.

It's the essential stuff to know about your pets.
Each topic takes 20-30mins and is based on pet health youtubes on
www.pethealthawareness.co.nz
sent via email each week.

For animal lovers - suited to 10-12yrs.
Certificate at completion.

Drawing competitions and prizes.

Just \$40



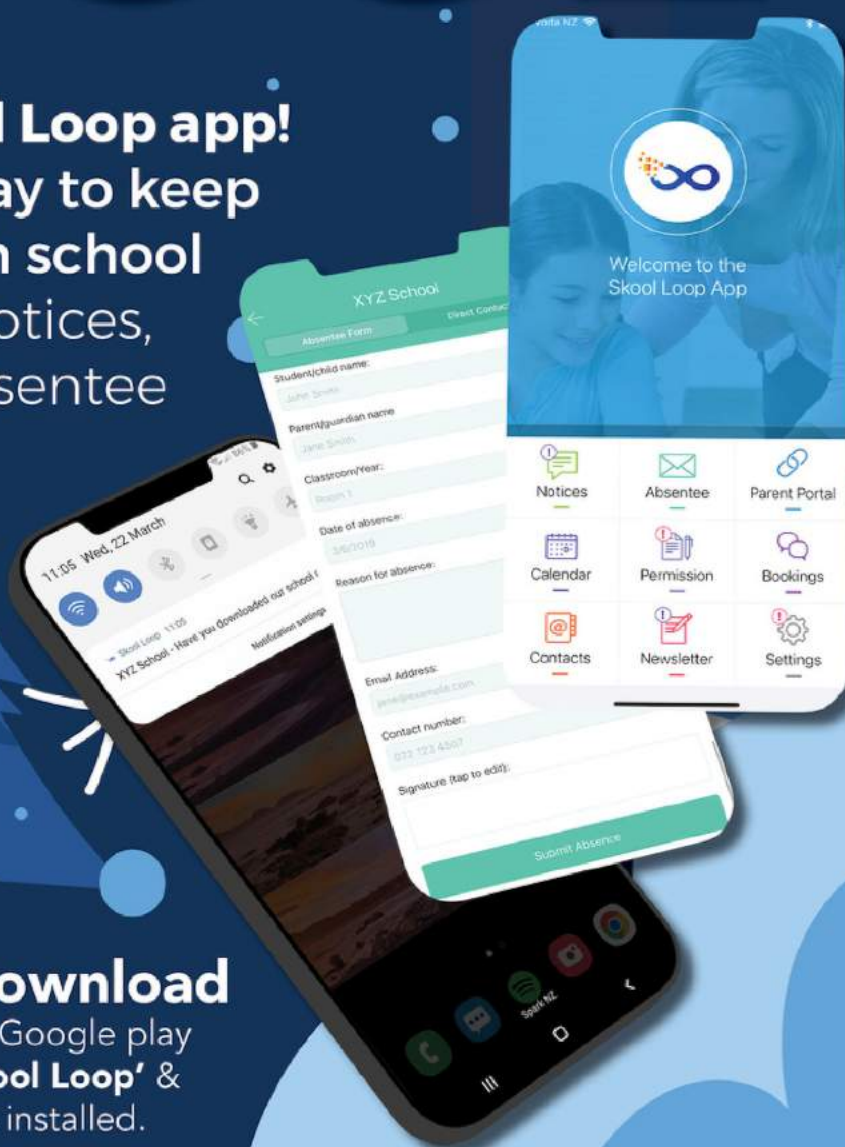
Register at
pethealthawareness@gmail.com
giving your name, age, town and email.

5 July '24



Keeping It COOL

With our Skool Loop app!
Download today to keep
up to date with school
information. Notices,
newsletters, absentee
notifications
and much
more.



Simple free download

Scan the QR code or In Google play
& App Store search '**Skool Loop**' &
choose our school once installed.



PLEASE SUPPORT THOSE WHO SUPPORT US



Kurt Lindsay 027 469 9685
kurt.lindsay@bayleys.co.nz

NO.1 BAYLEYS MARLBOROUGH SALESPERSON 2016/2017 TOP 5% OF BAYLEYS SALES PEOPLE 2016/2017

KURT LINDSAY TEAM. BAYLEYS



Havelock

4 FOUR SQUARE SUPERMARKET

68 MAIN RD, HAVELOCK. PH: 03 574 2166

Pelorus Bridge Cafe & camping ground

Proudly Supporting Rai Valley School & Community

03 5716 019

GJ CURRIE ELECTRICAL

027 439 4606 • greg@pelorusvalley.co.nz

PO Box 52, Havelock 7150



TASTING ROOM

Thursday 11am-3pm
Friday 11am-8pm
Saturday 11am-3pm
Sunday 11am-3pm

23 Inglis St, Havelock
Phone: 03 574 2575

Mills Bay MUSSELS

RAI VALLEY MOTORS

Proprietors: Phillip & Kelly Hawkins

OPEN 6 DAYS

PETROL - DIESEL - OIL
AA MEMBER - ENGINE RECONDITIONING & WELDING - CHAINSAWS
LAWN MOWERS - GENERAL ENGINEERS

Main Road, Rai Valley

☎ 571 6014 A/H 571 6105



THE MILLERS REST

RAI VALLEY

BAR & RESTAURANT

BOTTLE STORE

Rai Valley Brick Oven Cafe

Our Specialties:

Country Fried Chicken - Catering
Coffee - Takeaways - Groceries

Homemade Food At It's Best

Proudly Supporting Rai Valley School

Ph 571 6005

VETS ON ALABAMA

RURAL & URBAN VETERINARY SERVICE

OPEN 7 DAYS

Mon - Fri: 8am - 5.30pm
Sat & Sun: 8am - 1pm

OPEN TILL 7PM WEDNESDAY

PH: (03) 578 6965

www.vetsonalabama.co.nz

165 Alabama Rd, Blenheim

TNL

TNL supports the safety of children sharing our road network in communities throughout the Tasman region

B careful
B bright
B seen
B safe

Phone Carl Harris Branch Manager (03) 571 6118
AH (03) 571 6066 E carl.harris@tnl.kiwi

FRENCH PASS STORE

Groceries, meat, fresh fruit & veg, Bait, tackle, ice.
Coffee, hot/cold food & drinks.

EFTPOS. OPEN 7 DAYS.

PH 022 439 6171

VENUE HIRE

PHONE 03 651 0050

f i themillersrest

Marlborough Helicopters

Marlborough Helicopters Ltd

Spraying, topdressing, lifting and air transport

Office & A/H (03) 578 9684

rem LTD

Phone 03 571 6129

- General Engineering/Aluminium/Stainless
- Full Mechanical/WOF/MTA
- Hydraulics/Sales & Service/Mobile Truck
- Remquip/Forestry Equipment (Satco)
- Storage/Lockup

www.remgroup.co.nz

6781 STATE HIGHWAY 6

03 571 6325

STORE MANAGER
KRISTIN ALDRIDGE

NEW ZEALAND FARM SOURCE

Dairy for life



SME LIMITED

EXCAVATION

- LICENSED DIGGER OPERATOR
- RELIABLE & EFFICIENT LATE MODEL EXCAVATOR
- POLEHOLE BORING • TILT & GRAPPLE BUCKETS
- TOPSOIL • SAND • AGGREGATES
- SLIP REMOVAL & STORM DAMAGE REPAIR
- SITEWORKS & EARTHMOVING
- TRENCHING • DRIVEWAYS

CONSTRUCTION

- LICENSED BUILDING PRACTITIONER
- RETAINING WALLS
- POLESHEDED / FARMSHED CONSTRUCTION

ADRIAN MARTIN:
027 274 2008 OR A/H: (03) 571 6327
me@smeltd.co.nz