

Newsletter

Issue No. 6 | 10th May 2023

Tumuaki's Report



Kia ora koutou,

Welcome to the first newsletter for Term 2. We started the term with a Teacher Only Day. This was an opportunity for our staff to work on some of the changes that are coming with the new Social Science curriculum and the Literacy curriculum.

Students who are in Year 10 and below will be required to pass a Literacy and Numeracy qualification that is separate from English and Maths in Year 11. The assessments for this are online and will occur in mid-year and end of the year.

Longer-term; schools are needing to look at how literacy and numeracy is being delivered though out the school. This year we are trailing the national literacy and numeracy assessment with our Year 10 and 11 students. There will be further information coming out soon for the parents of students involved.

I was fortunate to be able to attend the ANZAC service in Rai Valley this year. Thank you to everyone who had a role in the organisation of this. It was a reflective service with some very poignant moments. It is an important opportunity to acknowledge our past and the sacrifices that were made by so many.

Our Details:

Rai Valley Area School

6700 SH6, RD 2 Rai Valley

Marlborough 7192

Telephone: (03) 571 6016

Email office: office@rai.school.nz

Web address: www.rai.school.nz

Our People:

Principal: Maree Furness

Deputy Principal: Mike Wilson

Primary Leader: Karen Davies

Senco: Janine Sorensen

Learning Support Teacher: Theresa Neal

Executive Officer: Selene Turner

Receptionist: Pauline Agnew

Caretaker: Shane Dearman



Next week is Road Safety Week as well as Pink Shirt Day on Friday. Our junior classes will focus on several activities relating to road safety. Our concerns always focus on the school car park and the crossing of the bridge by Alfred Stream. As winter weather continues to set in, could I ask parents to be extra vigilant when dropping off and picking up children?

On Friday we have a team competing in the Marlborough school gymnastics competition. We wish them well and hope they have an enjoyable day. Vincent Maisey is traveling to Culverden this week for the TOSI Tournament Trials. We wish Vincent well and hope the weather is not too crisp.

This term we are likely to continue to be impacted by industrial action. We will endeavor to give you as much prior knowledge as possible.

**Noho ora mai
Maree**



**RVAS Navy Soft Shell Jackets
In Stock now \$70 each**

Calendar Dates

Marlborough Gymnastics Festival

Friday 12th May

Road Safety Week

15th - 19th May

RVAS BOT Meeting | Library

25th May - 5:45pm

RVAS BOT Meeting | Library

22nd June - 5:45pm



After School care is back this year.
For bookings and enquiries contact
Renee Jope on 027 775 0083.
It will be based out of the library again.
Rates are \$5 per child per hour





Greetings Everyone

Week 2 at an end already. We are gearing up for lots of events this term, in the middle of juggling industrial action which is really hard to follow exactly what is happening for everyone. We will do our best to keep you informed.

This is coming to you with the best information we have at hand.

- **Gymnastics Festival** – 15 students participating Friday 12th May in Blenheim
- **Term 3 | Pet Day** will be in late September – run over 2 days

It has been suggested that we move our Pet Day to the second to last week of Term 3. (Tues/Wed 19/20 or 20/21 Wed/Thurs).

- Year 6–8 students who have not been to Maud Island, will have the opportunity in the last week of Term 3. Actual dates are to be confirmed. The proposed date is 18th September.
- Mrs Carver is coordinating our entry in the Marlborough Schools Music Festival in the week of 12 – 14th of September.
- Kapahaka is to begin soon, so this will become a regular event on Wednesday lunchtimes.

Our Primary Syndicate production for Term 4 is just in its infancy, and will begin with classes and us all working together next week. This production will be staged in mid to late November.

At assembly today several children received class awards for their hard work. Well done to all of you.

Three children also received a brand new book, from Renee and the Duffy books for

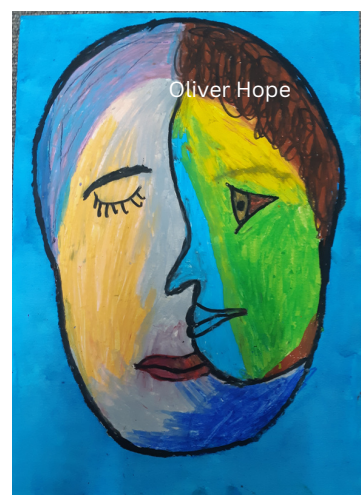
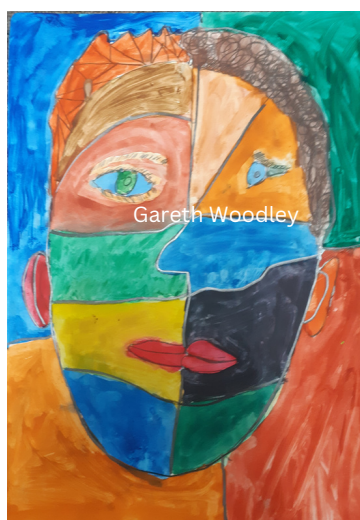
**'Caught being good'.
Extra well done.**

Although Year 7–8 are not officially part of the Primary Syndicate, I do see them for Art two times a week and for Hard Technology also.

In Art we have been practising our drawing skills and drawing facial features. Over the last couple of lessons they have been exploring abstract faces, with paint and pastel.

Oliver, Marno and Gareth have examples here for you to see. Well done boys.

**Ngā Mihi
Karen Davies**





Kia ora, Parents and caregivers

In addition to Tuesday's regional strike, the PPTA Teachers' Union has put in place a series of rolling year-level strikes over the coming months.

We had the first of these last Thursday. The next of these is this Thursday the 11th of May where Year 13s are set to be rostered home.

Due to our small number of Year 13 students, we won't be rostering these students home and they can attend school on this day. In cases where they cannot attend their classes, we will put supervision in place so that students are able to continue with their studies.

Below are the dates for the subsequent rosters home by Year level. As previously mentioned we will have to make decisions on our ability to staff the school on a level-by-level / date-by-date basis. Please also bare in mind that if Union negotiations are successful these dates will be cancelled.

If you have any further questions about these actions, please get in touch.

Dates of Rolling Rostering Home:

Thursday 11 May – Year 13
Tuesday 16 May – Year 9
Wednesday 17 May – Year 10
Thursday 25 May – Year 11
Tuesday 30 May – Year 13
Thursday 1st June – Year 12
Tuesday 6 June – Year 10
Thursday 8 June – Year 9

Ngā mihi
Michael Wilson



COMMUNITY GRANTS

Mussel Festival applications for grants are now open, and close on 31st May

The Mussel Festival Committee invite applications for grants from community organisations servicing the Rai Valley, Canvastown, Havelock, Okaramio, Linkwater, Kenepuru and Pelorus Sound area, including those organisations that provide:

- Emergency rescue services,
- Public amenities, recreation facilities and activities.
- Public works and services,
- Services for the protection of the environment,
- Services for the prevention of cruelty to animals,
- Health and Education

To apply:

- Go online at the Mussel Festival website (<https://www.havelockmusselfestival.co.nz/grants/>)
- Download an application form from the same location
- Pick up a form from Havelock Healthcare Pharmacy Depot
- email Ian Cameron ianc.cameron@xtra.co.nz

Ensure your application is received by 31st May 2023. Printed forms should be sent to:
Havelock Mussel Festival Inc.
c/o Marine Farming Association
PO Box 86
Blenheim 7201

or emailed to: office@havelockmusselfestival.co.nz by this date.



NZ Country School's are excited to be a part of the Fuel for Schools programme. It's very simple. Fern (previously Southfuels and Farmlands fuel) customers can nominate a participating school to receive **50 cents for every 100L** of bulk fuel they have delivered. Once a school reaches their \$1,000 target they can redeem free technology, sports & music packages or books. It's just that simple. The more people involved the sooner they will be rewarded!

Talk to our local Rural Account Manager Maisie Davison for more information on the Fuel for Schools programme, farm fuel, tanks, health and safety or any of your bulk fuel requirements, she's happy to pop out and have a chat!

Mobile: 027 593 6229
maisie.davison@fernenergy.co.nz
www.fernenergy.co.nz





With the new National Attendance Strategy we now have a school target of 95%

Term One Attendance

Attendance, Absences and Truancy Report					
From : 1 Jan 2023		To : 6 Apr 2023			
		Justified Absences	Unjustified Absences	Intermittent Unjustified Absences	Attendance Rate
Attendance Rate for School		6.9	4.6	4.7	83.7
Attendance Rate per Year Level (Selection)	Year 1	2.6	3.5		93.8
	Year 2	6.8	3.4	0.4	89.3
	Year 3	4.1	3.4	0.2	92.0
	Year 4	4.1	5.1		90.6
	Year 5	3.8	2.2		93.8
	Year 6	6.1	5.3	0.7	87.7
	Year 7	8.8	5.3	4.4	81.3
	Year 8	5.0	5.0	3.0	86.8
	Year 9	9.8	3.4	7.4	79.2
	Year 10	9.1	3.9	5.6	81.2
	Year 11	6.4	5.6	15.7	72.1
	Year 12	14.9	6.9	8.5	69.5
	Year 13	7.5	2.6	6.2	83.5

Each newsletter we will let you know how the year groups are doing -
please can we get our students to school
EVERY DAY MATTERS

Term Two Attendance

Attendance, Absences and Truancy Report					
From : 26 Apr 2023		To : 10 May 2023			
		Justified Absences	Unjustified Absences	Intermittent Unjustified Absences	Attendance Rate
Attendance Rate for School		3.1	10.0	4.2	82.5
Attendance Rate per Year Level (Selection)	Year 1				100.0
	Year 2	1.6			98.3
	Year 3	2.2	27.7	1.1	68.8
	Year 4	1.1	27.7		71.1
	Year 5				100.0
	Year 6	5.8	8.3		85.8
	Year 7	6.0	16.0	2.0	76.0
	Year 8	2.1	0.7	9.2	87.8
	Year 9	2.2	12.2	1.1	84.4
	Year 10	3.3	1.1	1.1	94.4
	Year 11	3.6	2.1	5.8	88.3
	Year 12	7.1	18.5	12.8	61.4
	Year 13	2.0	18.0	22.0	58.0





ANZAC Remembrance





Exciting changes are ahead for the Havelock Charity Shop and PAHT.

What is the Lucknow Lounge?

Who does "The Soup Run"?






What will be in the Health Hub?

A new Shop?

All these questions and more will be answered soon.

In the meantime.....We Need You



-  Would you like to visit people in their homes, delivering nutritious food?
-  Are you a sociable person who can spend a few hours having a cuppa with someone?
-  Do you get satisfaction out of putting things in order?
-  Are you interested in fashion and retail?
-  Are you a man with a few hours spare, to join our one and only bloke?

We need volunteers for all sorts of roles, all just requiring a few hours of your time. It's loads of fun, social and you are contributing to the health and well-being of your community! We provide funding to communities far and wide and would love to have volunteers from all over the Pelorus area.

Contact Glenda on 022 105 4672 or Jenny on 021 656 771

Check our website to see what we are about. www.PelorusAreaHealthTrust.co.nz

Facebook: CharitableTrustHealth and HavelockCharityShop

Picton Society of Model Engineers Incorporated (Picton Rail and Sail Society)



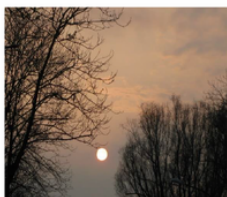
World-famous on the

Picton foreshore

Newsletter May 2023

Newsletter editor, Brian Morris, 021 192 2936

A few cold mornings recently have reminded us that winter is just about here, and members will have received their early winter roster (covering May and June). Aside from the chill, the new Sundays-only roster we're operating now is a reminder that the summer crowds are gone, but we still have our loyal locals and visitors on and off the ferries to keep us busy.



Speaking of visitors, we had a big treat with the arrival of Brian, Rachael and their homemade loco Hippo on Sunday 30 April, to do a run on our track. Brian has visited both us, and the model railway club at Brayshaw Park, many times over the years from the Christchurch club. He and Rachael have now moved from Christchurch and are brand-new "Blenheimers", so we hope to see a lot more of them in the future. *Colin and Judy Gray* had a go on Brian's loco during their morning shift, and *Arthur Pascoe* and *Murray Couling*

railandsailpicton@gmail.com

Page 1 of 4

Westpac Bank 03-1710-0001213-00



Saturday 20th
& Sunday 21st
May 2023



PHOTOSHOOT FUNDRAISER

with Dianne Jennison - NZ Family Portraits

Get a 10x13" colour family portrait normally valued at \$79.00 for only **\$20.00** - great value!

Family, friends, neighbours, relatives, all welcome..even the family dog!!

**VENUE: Volunteer Marlborough
Shop 8 - 1 Market Street**

****An adult member of the family or group must be in the photo****

**Appointment times will be
allocated upon payment of \$20.00**

For Bookings & Enquiries:

JULIE CADWALLENDER (Shoot Coordinator)

027-424-6942

julie.cadwallender@gmail.com



WE ARE BACK! NEW PLAYERS WELCOME JUNIOR BADMINTON

Mondays, 6-7pm

St Mary's Hall, Cnr Hodson & Francis Streets

\$5 a night

Bring a drink bottle & non-marking shoes

facebook.com/BlenheimBadminton



Hi Everyone,

Please make sure you check the draw each week online, we have made a couple of small changes. We do also have a new team entering in the year 5/6 Grade so this draw will change slightly from next week.

<https://www.marlbroughnetball.org.nz/Draws-and-Results>

The home games at Tokomaru will have confirmed times in the next week. The current times on the draw are not correct.

Umpires will also be sorted by Thursday so keep an eye on this.

Ngā mihi nui | Kind regards
Tina Lillie
Marlborough Netball
021 556 486





Resilience *Taikaha*

Means coping
with challenges
and bouncing back.

THE KIWI CAN CORNER



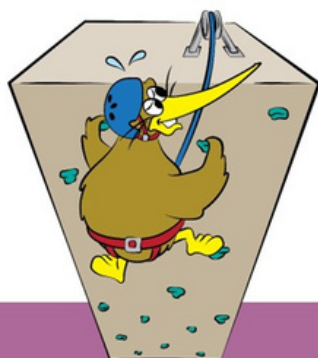
This week in Kiwi Can we are learning more about goal setting – specifically how to set effective goals so we can achieve more. Older tamariki will also be exploring what keeps us motivated to achieve our goals.

Some conversation starters for this week...

- Who around you can help support you with your goals? What are some of the ways they can help you without doing it for you?
- Who is someone in your life who is a role model and encourages you to do your best?
- How can *you* support other people (like your friends, your siblings etc) to 'try, try again' when *they* are facing a challenge?
- There is a saying that "failure isn't final until you quit". What do you think that means? Do you agree, or not? Why?
- When we believe we can achieve our goals and we work hard to achieve them – what happens?
- How can *you* stay motivated to achieve your goal?



Follow [@GraemeDingleFoundationMarlborough](https://www.facebook.com/GraemeDingleFoundationMarlborough) to stay up to date



Resilience *Taikaha*

Means coping
with challenges
and bouncing back.

THE KIWI CAN CORNER



This week in Kiwi Can we are beginning on our module about **goal setting**. We are discovering more about what a goal is, and how setting goals can help us challenge ourselves and enhance our resilience.

Going through life we may face challenges along the way - and these challenges may cause us to become discouraged and want to give up. It's really important we can bounce back from 'failure' or disappointments and 'try, try again!' Having a goal can keep us focused on continuing to try 😊

Ideas to carry on the learning at home:

- What does it mean to have a "goal"?
- If we want to achieve something, how can setting a goal help us?
- What is a goal you have set for yourself at the moment? What do you need to do to get there? How do you think you will feel when you have accomplished it?
- What *word* would you choose to describe how you want this year to be for you? (You can choose more than one if needed!)



Follow [@GraemeDingleFoundationMarlborough](https://www.facebook.com/GraemeDingleFoundationMarlborough) to stay up to date





Key School Dates for 2023

Monday 5 th June	King's Birthday
Friday 30 th June	Term 2 Ends
Monday 17 th July	Term 3 Begins
Friday 22 nd September	Term 3 Ends
Monday 9 th October	Term 4 Begins
Monday 23 rd October	Labour Monday
Monday 30 th October	Marlborough Anniversary
Monday 6 th November	NCEA Examinations Start
December 10 th -14 th	Final week of Term 4 Last Day to be confirmed

Mark and Simone Zillwood (below) are catchment group leaders for the Pelorus/Wakamarina. They expect to be chatting over the gate, not just with farmers but anyone wanting to be part of community restoration of land through Te Hoiere Project. "We'll let people know what help's available, feed ideas and concerns back to Project partners and support community initiatives like workshops, meetings and working bees." The Zillwoods milk 140 cows on a 50-hectare effective farm between Canvastown and Pelorus Bridge. A stream runs through the property, backed by regenerating native bush. About 10 years ago they started riparian planting - mostly cabbage trees, manuka, kanuka, flax, pittosporum, Carex and ribbonwood - following up with three release sprays.



Rai/Ronga Catchment Leader, Kristin Aldridge (below), is a familiar face to local dairy farmers, working at Fonterra-owned FarmSource Rai Valley as manager and technical sales rep.

She sees the two roles as complementary, building on experience advising farmers on crops to discussing options for protecting waterways.

"Four years ago, farmers felt attacked on sustainability issues," says Kristin. There's been a change of mindset. At the end of the day, everyone takes pride in looking after their water and land."

Kristin grew up in Rai Valley and was educated at Rai Valley School which her two sons now attend.



Contact:

Karen Morrison – Linkwater - kaz_morrison@yahoo.co.nz – 0274635071

Kristin Aldridge – Rai/Ronga kristin.aldridge@fonterra.com – 0275590190

Mark and Simone Zillwood – Pelorus/Wakamarina – simonereitsma@hotmail.com
035741244





Kurt Lindsay 027 469 9685
kurt.lindsay@bayleys.co.nz

NO.1 BAYLEYS MARLBOROUGH SALESPERSON 2016/2017 TOP 5% OF BAYLEYS SALES PEOPLE 2016/2017

KURT LINDSAY TEAM. BAYLEYS



Havelock

4 FOUR SQUARE SUPERMARKET

68 MAIN RD, HAVELOCK. PH: 03 574 2166

Pelorus Bridge Cafe & camping ground

Proudly Supporting Rai Valley School & Community

03 5716 019

GJ CURRIE ELECTRICAL

027 439 4606 • greg@pelorusvalley.co.nz

PO Box 52, Havelock 7150



TAOSTING ROOM

Thursday 11am-3pm
Friday 11am-8pm
Saturday 11am-3pm
Sunday 11am-3pm

23 Inglis St, Havelock
Phone: 03 574 2575

Mills Bay MUSSELS

www.millsbaymussels.co.nz

RAI VALLEY MOTORS

Proprietors: Phillip & Kelly Hawkins

OPEN 6 DAYS

PETROL - DIESEL - OIL
AA MEMBER - ENGINE RECONDITIONING
& WELDING - CHAINSAWS
LAWN MOWERS - GENERAL ENGINEERS

Main Road, Rai Valley

☎ 571 6014 A/H 571 6105



THE MILLERS REST

RAI VALLEY

BAR & RESTAURANT

BOTTLE STORE

Rai Valley Brick Oven Cafe

Our Specialities:

Country Fried Chicken - Catering
Coffee - Takeaways - Groceries

Homemade Food At It's Best

Proudly Supporting Rai Valley School

Ph 571 6005

VETS ON ALABAMA

RURAL & URBAN
VETERINARY SERVICE

OPEN 7 DAYS

Mon - Fri: 8am - 5.30pm
Sat & Sun: 8am - 1pm

OPEN TILL 7PM WEDNESDAY

PH: (03) 578 6965

www.vetsonalabama.co.nz

165 Alabama Rd, Blenheim

TNL

TNL supports the safety of children sharing our road network in communities throughout the Tasman region

**B careful
B bright
B seen
B safe**

Phone Carl Harris Branch Manager (03) 571 6118
AH (03) 571 6066 E carl.harris@tnl.kiwi

FRENCH PASS STORE

Groceries, meat, fresh fruit
& veg, Bait, tackle, ice,
Coffee, hot/cold food & drinks.

EFTPOS, OPEN 7 DAYS.

PH 022 439 6171

VENUE HIRE

PHONE 03 651 0050

f i themillersrest

Marlborough Helicopters

Marlborough Helicopters Ltd

**Spraying, topdressing, lifting
and air transport**

Office & A/H (03) 578 9684

rem LTD

Phone 03 571 6129

- General Engineering/Aluminium/Stainless
- Full Mechanical/WOF/MTA
- Hydraulics/Sales & Service/Mobile Truck
- Remquip/Forestry Equipment (Satco)
- Storage/Lockup

www.remgroup.co.nz

6781 STATE HIGHWAY 6
03 571 6325

STORE MANAGER
KRISTIN ALDRIDGE

NEW ZEALAND FARM SOURCE

Forsterra Dairy for life



SME LIMITED

EXCAVATION

- LICENSED DIGGER OPERATOR
- RELIABLE & EFFICIENT LATE MODEL EXCAVATOR
- POLEHOLE BORING • TILT & GRAPPLE BUCKETS
- TOPSOIL • SAND • AGGREGATES
- SLIP REMOVAL & STORM DAMAGE REPAIR
- SITEWORKS & EARTHMOVING
- TRENCHING • DRIVEWAYS

CONSTRUCTION

- LICENSED BUILDING PRACTITIONER
- RETAINING WALLS
- POISHED / FARM SHED CONSTRUCTION

ADRIAN MARTIN:
027 274 2008 OR A/H: (03) 571 6327
me@smeltd.co.nz