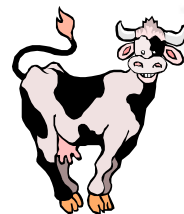
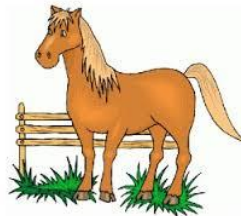




Rai Valley Area School Pet Day 2019



Monday 21st October ~ Indoor Section
Tuesday 22nd October ~ Outdoor Section

Ribbons, Cups and Trophies

Section 1 – Outdoor

- Champion & Reserve Champion Ribbons in most animal categories
- RVDHS Cup Most points in Lamb Section
- Best Goat Cup Most points in Goat Section
- Best Rabbit Cup Most points in Rabbit Section
- Best Dog Cup Year 1 – 3
- Best Dog Cup Year 4 – 6
- Best Dog Year 7 – 13
- Horse Trophy Overall points
- Payton Cup Best Overall Bird
- BGAC Cup Most Points for Pets & Poultry



Section 2 – Indoor

- Floral Work Trophy Most points in floral section
- BGAC Committee Cup Most overall points indoor section
- Secondary Cup Most overall points indoor section for secondary students
- Photography: - J Neal Most Outstanding Photography
- Pre School Cup: - D Payton Most overall points

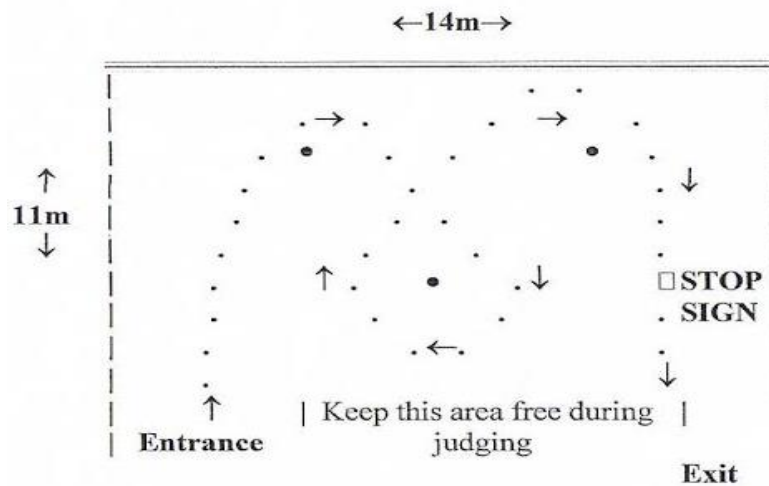
Rules

- Open to students of Rai Valley Area School and preschool children, and by special invitation.
- Non-perishable Indoor entries are encouraged to be at school on **Friday 18th October**.
- All Indoor entries must be ready for Judging by **12:40 p.m.** on **Monday 21st October**.
- All sections will be judged in class groups unless stated as Open Class.
- Exhibits may be divided into sub sections where appropriate.
- **Pre-school children may enter any pet category but must have adult support.**

Schedule of Outdoor Exhibits

Animal Criteria and Rules

- It is the responsibility of the entrant to ensure the animals are tied, fed, watered and sheltered when not being judged.
- Lambs must be born on or after the 1st August of the current year.
- Plan of leading course for lambs as follows:



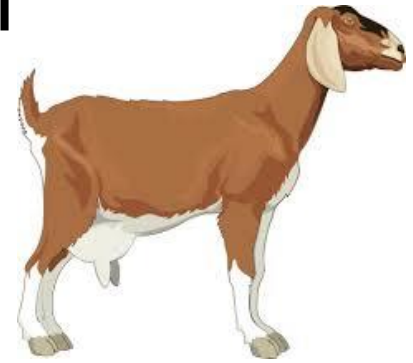
Lamb Section

A.	# Care & Knowledge # Care & Knowledge # Care & Knowledge	Y1 – Y3 Y4 – Y6 Y7 - 13
B.	# Ringcraft # Ringcraft # Ringcraft	Y1 – Y3 Y4 – Y6 Y7 - 13
C.	# Best Pet Lamb # Best Pet Lamb # Best Pet Lamb	Y1 – Y3 Y4 – Y6 Y7 – Y13
D.	# Best Lamb for Export	Open
E.	# Best Wool Lamb	Open
F.	# Best Coloured Wool for Spinning	Open
G.	# Best Breeding Ewe	Open
H.	Lamb Drinking	Open
I.	Best Pre-School Lamb	



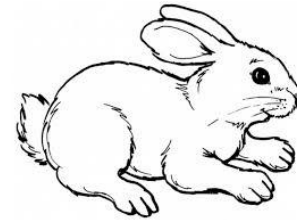
Goat Section

- A. # Best Pet Goat/Ringcraft Open
- B. # Care & Knowledge Open
- C. # Best Fibre Open
- D. Best Pre-School Goat



Rabbit Section

- A. # Best Fibre Open
- B. # Care and Attention/Best Pet Open
- C. # Fattest Rabbit (Meat) Open
- D. Best Pre-school Rabbit



Dog Section

- A. Best Overall Pup (6 months and Under) Open Y1– 13
- B. Best Pup or Dog Pre-school
- C. Dog Obstacle/ Agility Y1 – Y3
Y4 – Y6
Y7 – Y13
- D. Dog Obedience Y1 – Y3
Y4– Y6
Y7 – Y13
- E. Best Care, Attention & Handler Y1 – Y3
Y4– Y6
Y7 – Y13
- F. Best trick Y1 – Y3
Y4– Y6
Y7 – Y13



Champion and Reserve Champion Dog will be chosen from Sections C, D, and E
The child must be able to control their dog on the lead and by using voice.

Horse Section

- | | | |
|----|------------------------|--|
| A. | In-hand Classes (Open) | Best Presented
Best Care & Attention
Woolliest Horse / Pony
Obstacle Course |
| B. | Ridden Classes (Open) | Best Rider
Best Walking
Best Trotting
Best Mannered |



Poultry Section

- | | | |
|----|---------------|---|
| A. | Hens | Open |
| B. | # Pullets | Open (2 purchased during the previous Year) |
| C. | # Chicks | Open (3 raised from 1 day old with diary) |
| D. | Caged Birds | Open |
| E. | Geese & Ducks | Open |
| F. | Roosters | Open |



Pet Section

- | | | |
|----|---|------|
| A. | Best Domestic Pet (excluding Dog and cat) | Open |
| B. | Most Unusual Living Pet | Open |
| C. | Pre School, Any Pet (excluding cats) | |



Novelties Section

- | | |
|----|---|
| A. | Young Farmers' Competition for Year 7 – 13 students |
| B. | Grand Parade (students and pets may dress up) |
| C. | Stalls & Fundraising. |

Schedule of Indoor Exhibits

Exhibit Criteria and Rules

Class groups may be altered at the discretion of the Head Stewards.

Each student allowed only 1 entry per category.

All Categories marked with # can be entered in Group Day.

Section A: Collections

Year 1 – 4 & 5-8 Students



A collection should not be entered in successive years, unless it has been majorly added to or improved.
Judging will be done on quality of display.

These collections need to be contained either in the bottom of a box, fixed to cardboard/paper/wood.

1. Collections (on a fixed mount temporary or permanent)
Stickers, Stamps etc, Toys, Books etc

Section B: Technology

Year 1-4 & 5-8 Students

Made at home or school.

1. Models Made with a planned set following instructions eg. Lego
2. Models Your own design with no set instructions used – can be lego, meccano, kenex or any other brand
3. Hard Technology Any completed wood and metal work
4. Science Technology Display Own design and must include a brief (plan)
5. **# Paper Mache** **Under 30cmx30cm**




Section C: Photography

Year 1-4 & 5-8 Students

Photographs must be taken by the student within the last 12 months (from Oct 2018).

Photo size must be 6"x 4" and mounted on a single A5 coloured card. Only 1 entry per child per category. Please write section on the back.

Title but no frame or decoration. # Judged according to Group Day specifications
ANYTHING THAT DOES NOT MEET THE CRITERIA WILL NOT BE ACCEPTED FOR JUDGING

- | | | | |
|----|-------------------------------------|---|---|
| 1. | Human Study | Open Class |  |
| 2. | # Farm/Rural Study | Open Class
NOTE: can be standard or digital – not enhanced! Must be on photographic paper. | |
| 3. | Nature (object or individual study) | Open Class | |
| 4. | Digitally Enhanced | Open Class (please include a before and after on the same cardboard mount) | |
| 5. | Animal or Bird Study | Open Class | |

Section D: Floral & Vegetable

Year 1 – 8 Students Class Groups.

Items 1, 2, and 3 to be done at school

Judged according to Group Day specifications

- | | | |
|----|--|---|
| 1. | Sand Saucer | flower/leaf display in saucer |
| 2. | Buttonhole | |
| 3. | Arranged flowers in a vase, jug or jar | |
| 4. | Potted plant in a decorated container | |
| 5. | Vegetable or Fruit Novelty | |
| 6. | Miniature Sand Tray | Garden, farm or village scene. Meat dish size |
| 7. | # Natural Material Picture | Theme: Sports
<i>A4. No frame. Natural material such as bark, leaves, shells etc</i>
<i>No artificial material except adhesive</i> |



Section E: Handwriting/Computer

Year 1 – 8 Students Class Groups All items to be done at school apart from # 6 Pet Diary
Judged according to Group Day specifications

- | | | |
|----|---------------------------------|--|
| 1. | Handwriting. | Style conforming as practised in class. |
| 2. | # Handwritten Party Invitation. | A5 Landscape (not folded)
<i>NOTE: No computer work at all. 1 sided only</i> |
| 3. | # Poster | A4 Landscape
Promoting A&P Show (any media)
<i>NOTE: Must contain A&P Show 8th and 9th November. No computer work.</i> |
| 4. | Poetry Writing | An original poem written and decorated by the students. Size: A5. |
| 5. | Computer Designed Certificate | A4 Landscape |
| 6. | # Pet Diary | Requirement for school AND Group Day |
| 7. | # Pet Profile | For domestic and most unusual pet |
| 8. | Computer Graphics & Design | any subject (brochures, PowerPoints, etc.) |
| 9. | Maths Problem Solving | criteria set by individual teachers |

Section F: Creative Flair

Year 1 – 8 Students Class Groups
Judged according to Group Day specifications

- | | | |
|-----|--|--|
| 1. | Fabric Creation | |
| 2. | # Pet Animal Rock | <u>NOTE: Not to exceed 15cm in height or width.</u> |
| 3. | Decorated Plastic Bottle | <i>NOTE: 750ml bottle.
<u>Not to exceed 35cm in height or length</u></i> |
| 4. | Jewellery | <i>Own creation only</i> |
| 5. | # Junk Model Recycled Robot | All adornments must be recyclable (excluding paints and glues)
Must be smaller than 20 x 20 x 20 cm |
| 6. | Pet Pine Cone | |
| 7. | Decorated Boot or Shoe | No fresh flowers |
| 8. | Christmas Tree Decoration | <i>NOTE: 10cm x 10cm hanging. No Kit sets.
Child's own work.</i> |
| 9. | Mask | Theme: Discovery |
| 10. | # Decorated Wooden Spoon
(to be hung by handle) | <u>No longer than 35cm (including decorations). No fresh adornments.</u> |
| 11. | Decorated Hard Boiled Egg | |
| 12. | Artwork | |

Section G: Cooking

Year 1 – 8 Students Class Groups.

Displayed and covered on a plate. Judges to cut and sample first two items.

1. 3 biscuits
2. 3 decorated cupcakes
3. 3 pieces of uncooked slice e.g. 3 truffles or 3 chocolate crackles
4. Decorated cake.
5. Healthy Food Face on a bread and butter plate
6. 3 Cooked Savoury Items e.g. mini pizzas



Section H: Preschool

Open to all preschool aged children

1. Best Dressed Teddy or Doll
2. Pet Rock
3. Art Work
4. Lego
5. Floral arrangement

Section I: Mums, Dads, Grans & Grandads

Open to all community members who wish to enter!

1. Best baked creation Judges may cut and sample!
2. Best preserve, jam or chutney
3. Dad's Bake-Off
4. Colouring Competition A template will be available through the school
5. Wood/Metal Work Of own design and construction



Section J: Secondary Students

Open to Students Year 9 & 10 and 11-13 Groups



1. Soft Technology

- a. Fabric Creation

2. Hard Technology

- a. Original models – (may be made from commercial set e.g. lego but student design)
- b. Woodwork
- c. Metal work

3. Computer Graphics and Design

- a. Graphics and Design – PowerPoint / Keynote Presentation
- b. Computer Designed Certificate
- c. Computer Graphics Open



4. Art Work

5. Photography

Photographs must be taken by the student within the last 12 months (Oct 2018)
Photo size must be 6" x 4" and mounted on a single A5 coloured card. Only 1 entry per child per category. Please write section on the back.
Title but no frame or decoration.

- a. Human Study
- b. Animal Study
- c. Nature (object or individual study)
- d. Digitally Enhanced – please include a copy of the original on the same card

6. Cooking Displayed, covered on plate. Judges cut, sample 1st two items.

- a. 3 biscuits
- b. 3 decorated cupcakes
- c. 3 pieces of uncooked slice eg 3 truffles
- d. A mini pizza
- e. Decorated cake



7. Floral / Vegetable

- a. Sand Saucer
- b. Buttonhole
- c. Arranged flowers in a vase, jug or jar
- d. Potted plant in a decorated container

8. Creative Flair

- a. Jewellery
- b. Mask Creation Theme: Discovery
- c. Card
- d. Pet Diary

9. Collections

A collection should not be entered in successive years, unless it has been majorly added to or improved. Judging is done on the quality of display. These collections need to be contained either in the bottom of the box, fixed to cardboard/paper/wood

- a. Collections (on a fixed mount temporary or permanent)